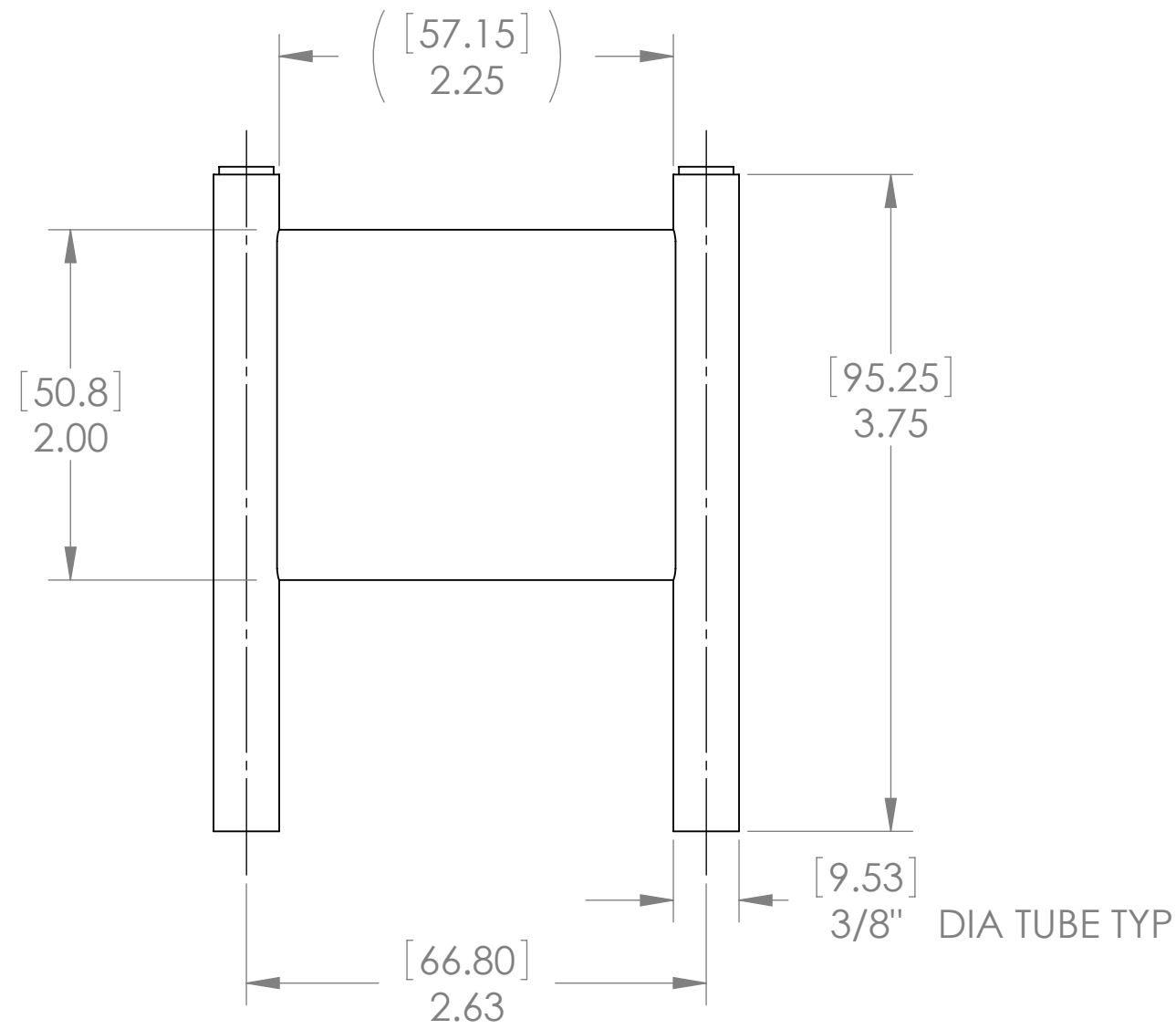


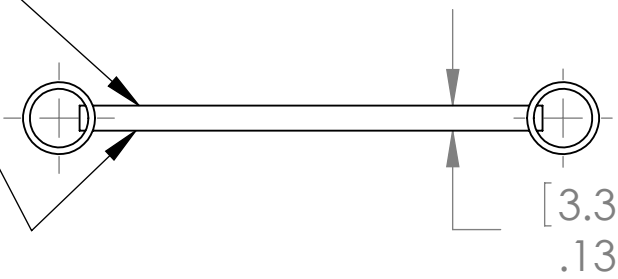
THIS DOCUMENT IS THE PROPERTY OF Lytron, Inc. AND REPRESENTS A PROPRIETARY ARTICLE IN WHICH Lytron, Inc. RETAINS ANY AND ALL PATENT AND OTHER RIGHTS, INCLUDING EXCLUSIVE RIGHTS OF USE AND/OR MANUFACTURE AND/OR SALE. POSSESSION OF THIS DOCUMENT DOES NOT CONVEY ANY PERMISSION TO REPRODUCE THE DOCUMENT OR MANUFACTURE THE ARTICLE OR ARTICLES SHOWN THEREIN.

REVISIONS						
ZONE	REV.	DESCRIPTION	DATE	DES	CHK'D	APP'D
	A	ISSUED	10-12-95	JJS		J O'L
	B	REDRAWN AND REV PER ECN 14842	5/9/07	JBP	PRV	PRV

"STANDARD"





MOUNTING SURFACES
(NON-DRILLABLE)



NOTES:

1) DIMENSIONS IN [] ARE IN MILLIMETERS.

		UNLESS OTHERWISE SPECIFIED		DRAWN J. SEARS		DATE 10-11-95				Lytron Inc. 55 Dragon Ct. Woburn Ma. 01801	
		ANGULAR DIMENSIONS ARE ± 1° SURFACE ROUGHNESS 125 (3.2 μ) BREAK EDGES .010 MAX. REMOVE ALL BURRS		CHK'D							
		TOLERANCE ON DECIMALS		APPV'D JACK O'LEARY		10-12-95		DRAWING TITLE			
		.X .XX .XXX		APPV'D				COLD PLATE ASSEMBLY			
		INCH ±.X ±.06 ±.XXX		APPV'D						DO NOT SCALE THIS DRAWING	
		(mm) ±.X ±.XX ±.XXX		MAT'L ALUMINUM				SIZE		FSCM NO.	
		THIRD ANGLE PROJECTION		FINISH NONE				C 11245		DRAWING NO.	
								C-CP20G01		REV B	
		DIMENSIONING AND TOLERANCING ARE PER ASNI STD. Y14.5						SCALE: 1/1		WT. 1	
APPLICATION		FINAL USED ON						SHEET 1 OF 1			