

# ProCleave™ HS

## ELECTRONIC FIBER CLEAVER

The ProCleave HS is an advanced electronic fiber cleaver for fibers up to 250 µm. The cleaver is specifically designed for use in production lines where ease-of-use, process speed and a high production yield is crucial. The cleaver is at the same time well suited for R&D environments.

The ProCleave HS is utilizing an advanced ultrasonic diamond scribe technology to achieve optimal cleave performance and consistency. The cleaver generates very flat end faces, low cleave angles (typical < 0.5°) with minimum blade intrusion.

The ProCleave HS has a clamping mechanism which is designed for ease of use and with process speed in mind.

The ProCleave HS is powered from an external power supply or the built-in rechargeable battery.

The ProCleave HS is used together with a fiber holder from a fusion splicer (adapted for all main splicer brands\*).



\* Fiber Holder not included in the delivery kit.

### Key Features

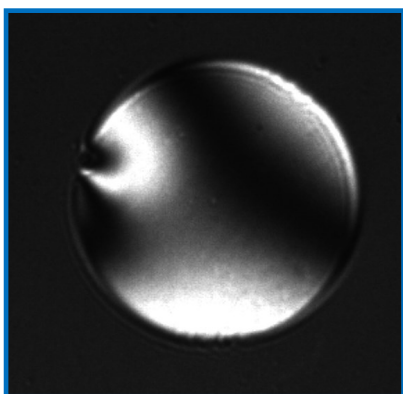
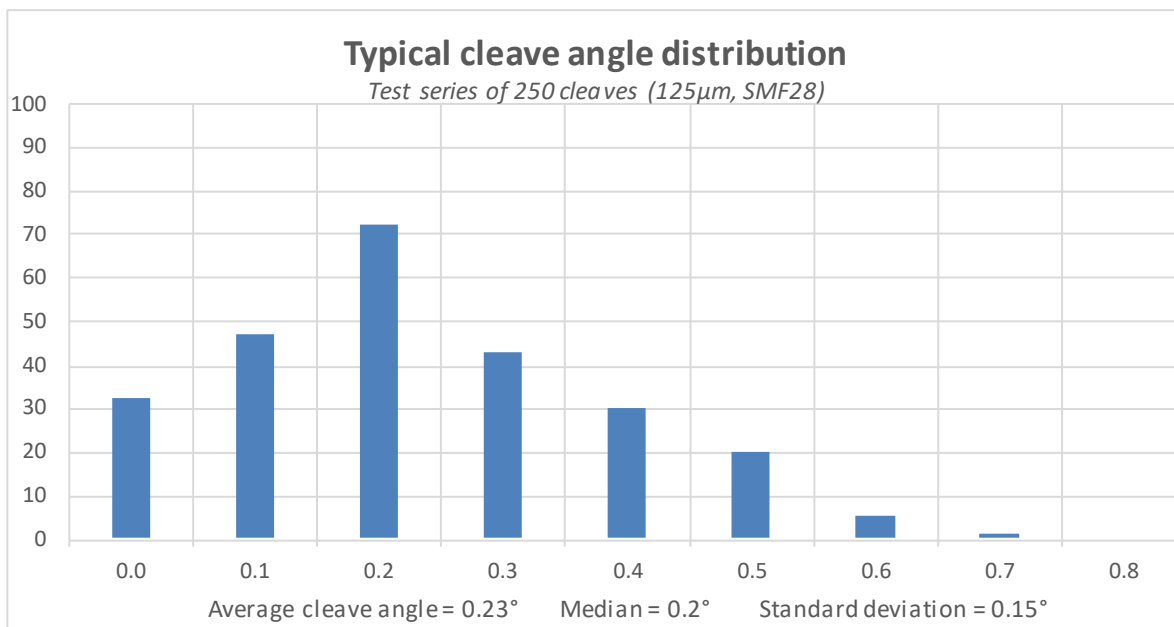
- Electronic cleave process for optimal cleave quality and repeatability
- Designed for fiber cladding diameters from 80 to 250 µm
- Low cleave angles with very flat end faces, typical < 0.5° (125µm, SMF28)
- Can be powered with battery or external power supply
- Delivered with platform that support Fujikura, Fitel and 3SAE fiber holders

### Technical Specifications

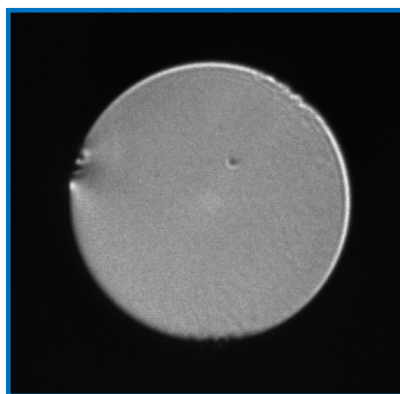
<b>Dimensions:</b>	150(W) x 94(D) x 47(H) mm 150(W) x 107(D) x 51(H) mm (incl. lever and rubber feet)
<b>Weight:</b>	0.91 kg
<b>Power Source:</b>	Built-in rechargeable Li-Ion battery or external power supply (100 - 240 V AC, 50/60 Hz)
<b>Supported fiber cladding:</b>	80 – 250* µm
<b>Supported fiber coating:</b>	Depending on Fiber Holder

\* Fiber cladding diameters from ~180 – 250 µm may require optional LD Clamp (CL-03-01002)

Product	Part #	Qty.
<b>NorthLab ProCleave™ HS</b>	<b>CL-03-01000</b>	
<b>Standard Package</b>		
Power Supply + Cord EU/US	CL-90-90005	1
Tool Kit	CL-03-01001	1
USB 2.0 Cable	N/A	1
User's Manual & PC Software (USB-stick)	N/A	1
<b>Optional Components</b>		
Spare Diamond Blade	CL-90-90001	
LD Clamp for fiber cladding ~180 – 250 µm	CL-03-01002	



Interferometer image approx. 0.15°



Magnified end face