

# P5000i Digital Analysis Microscope



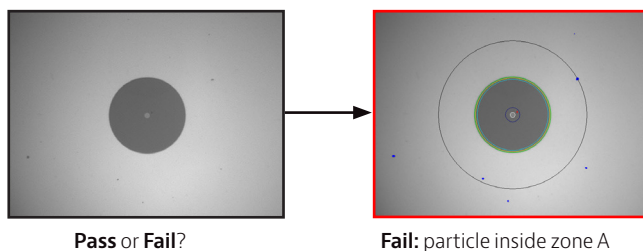
## Automated Fiber Inspection and Pass/Fail Analysis

The #1 cause for troubleshooting in optical networks is contaminated fiber connectors. To address this problem, the International Electrotechnical Commission (IEC) has developed a standard for acceptable fiber end-face quality. Yet certifying compliance to this standard can be a time-consuming, complex, and subjective procedure.

The P5000i is a digital handheld microscope that automatically inspects and certifies the end faces of fiber connectors according to industry standards and specifications. This digital microscope provides instant pass/fail results at the push of a button, eliminating subjective and time-consuming guesswork.

Compatible with multiple platforms, including T-BERD®/MTS-2000/4000/5800/6000A, 8000v2, HST-3000, Certifier40G, CellAdvisor JD720C, laptops, PCs, and Android mobile devices, the P5000i provides fast, repeatable analysis that easily integrates into existing test procedures. The world's leading manufacturers, installers, and service providers already rely on Viavi Solutions to certify their fiber connectors. Whether testing on the production line or in the field, the P5000i gives any technician that handles fiber the same capabilities in the palm of their hand.

## Eliminate Guesswork with Objective Testing



Pass or Fail?

Fail: particle inside zone A

### Key Benefits

- Inspect and certify fiber end-face quality at the push of a button, making your technicians instant fiber experts
- Ensure physical-layer performance by guaranteeing fiber connectivity meets industry standards
- Eliminate confusion with fast, easy, and objective testing
- Certify fiber end-face quality with your existing Viavi test platform or mobile device
- Let your technicians get it right the first time, drive best practices, improve quality of work, and optimize workflows
- Ensure lifetime connections and protect network investments by preventing damage to fiber components and equipment

### Key Features

- Connects via USB with multiple devices including Viavi tools, laptops/PCs, and Android mobile devices
- Repeatable pass/fail analysis eliminates subjective guesswork from the measurement process
- User-selectable acceptance profiles allow certification to any acceptance criteria
- Includes FiberChekPRO™ software for analysis and reporting with laptops/PCs
- Automatic image centering ensures the fiber always appears in the center of the screen
- Detailed report generation to certify and document results
- Dual magnification (200X and 400X) functionality provides high-level and detailed inspection and analysis
- Magnification toggle button allows easy switching in both live and analysis views
- Accepts FBPT series tips for comprehensive support for all connector types used in today's network

## The World's Most Versatile Pass/Fail Analysis Solution

The P5000i works with Viavi solutions that users rely on daily for essential testing. This means that users can guarantee connector compliance to industry standards with a fast, repeatable analysis that easily integrates into their existing test procedures. It easily connects with Viavi test solutions and mobile devices via a simple USB connection.



The FBPP-WIFI Wireless Adapter allows you to connect your FBP-P5000i wirelessly to an Android™ or iOS device. It can also be used with Windows® to connect to a mobile device, PC, or laptop via WiFi.



Download FiberChekMOBILE to your Android device from the Google Play store.



Download FiberChekMOBILE to your iOS device from the iTunes store.

## FBP-P5000i Specifications

| General Technical (typical at 25°C) |   |
|-------------------------------------|---|
| Weight                              | 110 g (3.88 oz)                           |
| Dimensions (w × h × d)              | 140 x 46 x 44 mm (5.5 x 1.8 x 1.7 in)     |
| Low mag field-of-view (FOV)         | Horizontal: 740 μm<br>Vertical: 550 μm    |
| High mag field-of-view (FOC)        | Horizontal: 370 μm<br>Vertical: 275 μm    |
| Live image                          | 640 x 480 fps                             |
| Connector                           | USB 2.0 (backwards compatible to USB 1.1) |
| Cord length                         | 183 cm (6 ft)                             |
| Camera sensor                       | 2560 x 1920, 1/2.5-in CMOS                |
| Particle size detection             | <1 μm                                     |
| Light source                        | Blue LED, 100,000+ hour life              |
| Lighting technique                  | Coaxial                                   |
| Power source                        | USB Port                                  |
| Certification                       | CE  |
| Warranty                            | 1 yr                                      |

## FBPP-WIFI Specifications

|              |  |
|--------------|--|
| Dimensions   | 218 x 50 x 131 mm (8.6 x 2.0 x 5.2 in)   |
| Weight       | 272 g (9.5 oz)   |
| Connector    | USB 2.0 (Micro-B)  |
| Power Source | Internal Li-ion Battery, USB power   |
| Run Time     | 5.5 hr   |
| Charge Time  | 2.5 hr (2.1 A max power source)<br>8 hr (500 mA max power source)                    |
| Power Supply | 5 VDC, 2.1 A USB power adapter with interchangeable wall plug for EU, UK, US, and AU |

## Ordering Information

| P5000i   |             |
|--|-------------|
| Description  | Part Number |
| P5000i Digital Analysis Probe with FiberChekPRO                                  | FBP-P5000i  |
| Kit: P5000i with FiberChekPro, 4 inspection tips, case                           | FBP-SD101   |
| Kit: P5000i and MP-60 with FiberChekPro, 4 inspection tips, 2 UPP adapters, case | FIT-SD103   |
| Kit: P5000i and MP-80 with FiberChekPro, 4 inspection tips, 2 UPP adapters, case | FIT-SD113   |
| Kit: P5000i with FiberChekPro, 7 inspection tips, case                           | FBP-MTS-101 |
| Activation key: P5000i Android device compatibility*                             | SW-FCM-A1   |
| Included Items   |             |
| Stand-Alone Device (FBP-P5000i)  |             |
| P5000i Digital Analysis Microscope   |             |
| Soft bag for microscope and accessories  |             |
| Carrying case for tips   |             |
| Inspection tip (patch cord: 2.5 mm)  |             |
| FiberChekPRO software installation disk  |             |
| QuickStart manual  |             |
| Kits with 4 Inspection Tips  |             |
| Bulkhead: SC, LC   |             |
| Patch cords: 2.5 mm, 1.25 mm   |             |
| Kits with 7 Inspection Tips  |             |
| Bulkhead: SC, LC, FC, SC-APC   |             |
| Patch cords: 2.5 mm, 1.25 mm, 2.5 mm APC   |             |
| Kits with an MP Series Optical Power Meter (OPM)                                 |             |
| MP series USB OPM  |             |
| 2.5 mm UPP adapter (FITP-UPP25)  |             |
| 1.25 mm UPP adapter (FITP-UPP12)   |             |
| FiberChekPRO software installation disk  |             |
| Quickstart manual  |             |
| USB cable extender   |             |



## Inspection Ports

Viavi has over 300 tips, patch cords, and adapters available for inspecting different fiber optic connectors for a variety of different applications. This is not an all-inclusive list, but provides solutions for the most common connectors and applications. Please contact Viavi for more information.

### Tips

| <b>Description</b>                                 | <b>Part Number</b> |
|--|--------------------|
| LC-APC bulkhead (for FBP probe)                    | FBPT-LC-APC        |
| FC bulkhead (for FBP probe)                        | FBPT-FC            |
| FC-APC bulkhead (for FBP probe)                    | FBPT-FC-APC        |
| SC-APC bulkhead (for FBP probe)                    | FBPT-SC-APC        |
| MTP bulkhead long reach (for FBP probe)            | FBPT-MTP-L         |
| MTP-APC polish bulkhead long reach (for FBP probe) | FBPT-MTPA-L        |

### Patch Cords

|  |               |
|--|---------------|
| Universal 2.5 mm (for FBP probe)                       | FBPT-U25MA    |
| Universal 1.25 mm (APC polish slip fit (for FBP probe) | FBPT-U12MA-SF |

### Adapters (for devices with a dedicated patch cord microscope)

|                                      |            |
|--------------------------------------|------------|
| Universal 2.5 mm APC female threaded | FMAE-UAPC  |
| LC duplex female threaded            | FMAE-LC-2X |
| LC-APC female threaded               | FMAE-LCA   |
| MTP                                  | FMAE-MTP   |
| MTP APC polish                       | FMAE-MTPA  |

The activation key enables Android compatibility for both new P5000i orders and existing devices in the field. When purchased with a new product, the P5000i will ship pre-activated for Android compatibility. When purchased for activating an existing P5000i, the customer must provide the P5000i serial number with their order.

FiberChekMOBILE requires Android 4.1 operating systems or higher.

Many Android devices do not have a direct USB-A input port; connecting the P5000i (with a standard USB-A plug) may require a converter cable or hub to interface with the Android device.