

- 1.MATERIAL: D-ZK3M
 2.ASSUME 0.250mm BK7 WINDOW FOR LASER DIODE
 3.NOMINAL PARAMETERS:
 WAVELENGTH:633 nm
 NUMERICAL APERTURE:0.3
 EFFECTIVE FOCAL LENGTH: 11.0mm
 WORKING DISTANCE: 7.9mm

Notes :

1. Evenasphere Formula are defined by :

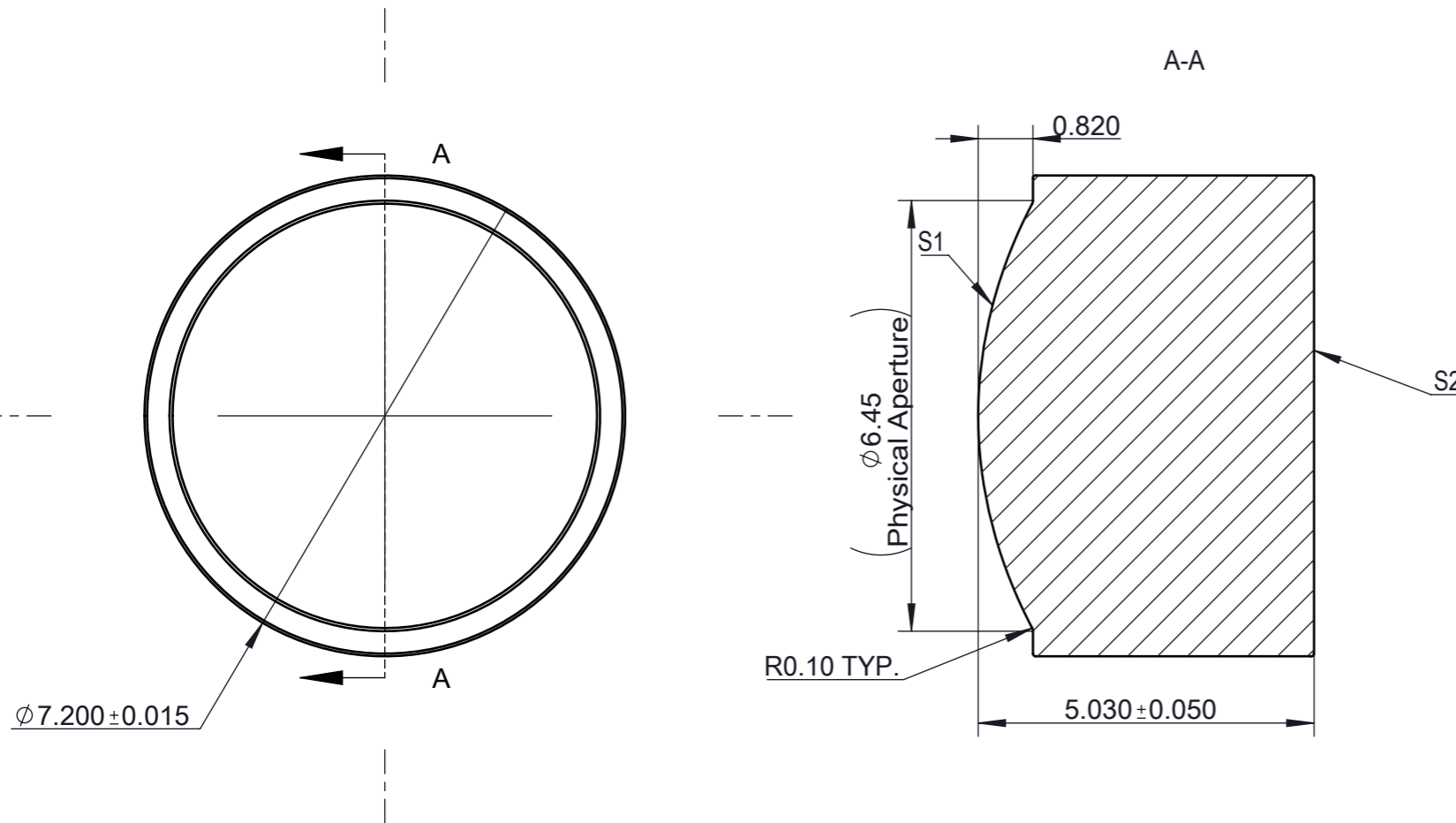
$$Z(r) = \frac{r^2 / R_c}{1 + \sqrt{1 - (1 + K) (r / R_c)^2}} + \sum_i A_{2i} r^{2i}$$

2. The coefficients are as below :

	S1	S2
R _c	6.428132	0.000000
K	-0.999999	0.000000
A ₂	0.000000E+00	0.000000E+00
A ₄	2.157028E-004	0.000000E0.0
A ₆	8.487378E-007	0.000000E0.0
A ₈	1.814654E-009	0.000000E0.0
A ₁₀	0.000000E+00	0.000000E+00
A ₁₂	0.000000E+00	0.000000E+00
A ₁₄	0.000000E+00	0.000000E+00
A ₁₆	0.000000E+00	0.000000E+00

3.REQUIREMENT

	S1	S2
Surface quality	S/D 40/20	
Clear Aperture	5.50mm	4.10mm
WFE	RMS<0.040λ@633nm, PV<0.270λ@633nm,50% Aperture	
Roughness	Ra<5nm	



Distributor

 where technologies meet solutions
 info@amstechnologies.com
 www.amstechnologies-webshop.com
 Contact us

Rev	ECO	Notes	Sign	Date
A	01	Initial	Clay	2021/7/6

MATERIAL
D-ZK3M

UNLESS OTHERWISE SPECIFIED

Unit is MM.

DEFAULT TOLERANCE:

.X ±0.25

.XX ±0.10

.XXX ±0.025

Angles: ±0.5°



光皓光学 (江苏) 有限公司
 GH Optics(Jiangsu) Co.,Ltd.

图幅 单位 第一视角

A4 公制

LDA130UC-10

A

第 1 张 共 1 张