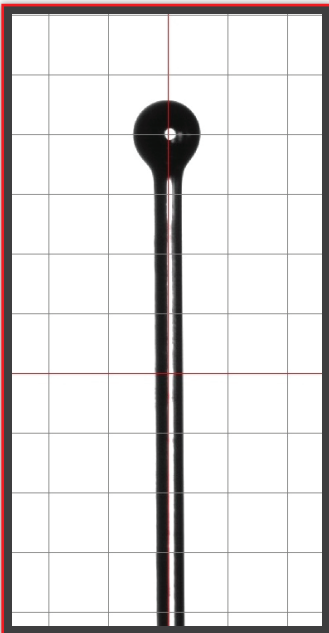


LENS FORMING STATION (LFS)

The 3SAE Lens Forming Station (LFS) uses our patented Ring of Fire Technology® to allow users to process a fiber end or cleave into a ball lens of a user specified diameter.

Utilizing precision mechanics, integrated high contrast optics and automatic fiber alignment, the Lens Forming Station (LFS) is the only commercially available system specifically designed for high-volume manufacturing targeting ease of use, high-accuracy and process repeatability.

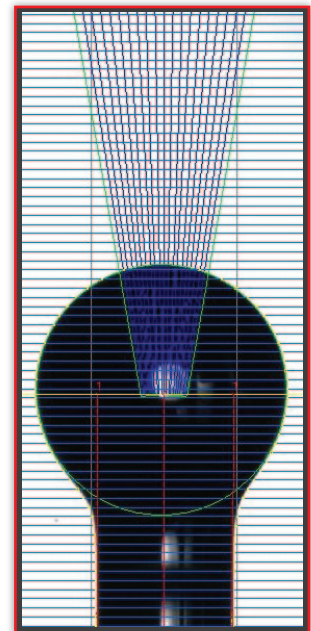
The Lens Forming Station (LFS) allows users to easily optimize a recipe to achieve a desired ball lens diameter utilizing 3SAE's glass processing control software by setting the target diameter and arc controls. Programmable pass/fail criteria including ball lens diameter, ball lens center and 3SAE's Effective Area Radius (EAR)[™] measurement can also be adjusted on a per program basis. Additional limits can be set to ensure that a prepared fiber of proper diameter is being loaded by the operator before allowing the process to begin. All adjustable parameters can easily be locked out, offering simple "one button" control to the operator while allowing ultimate customization of recipes from an engineer level.



Fully Processed Ball Lens

Real time image processing allows the user to view the lensing of a fiber in process. When lensing process is completed, the user is automatically alerted of pass/fail status based upon program specific criteria.

The 3SAE Lens Forming Station accommodates fiber diameters from 125 μm to 500 μm (clad O.D.), coating diameters up to 900 μm .

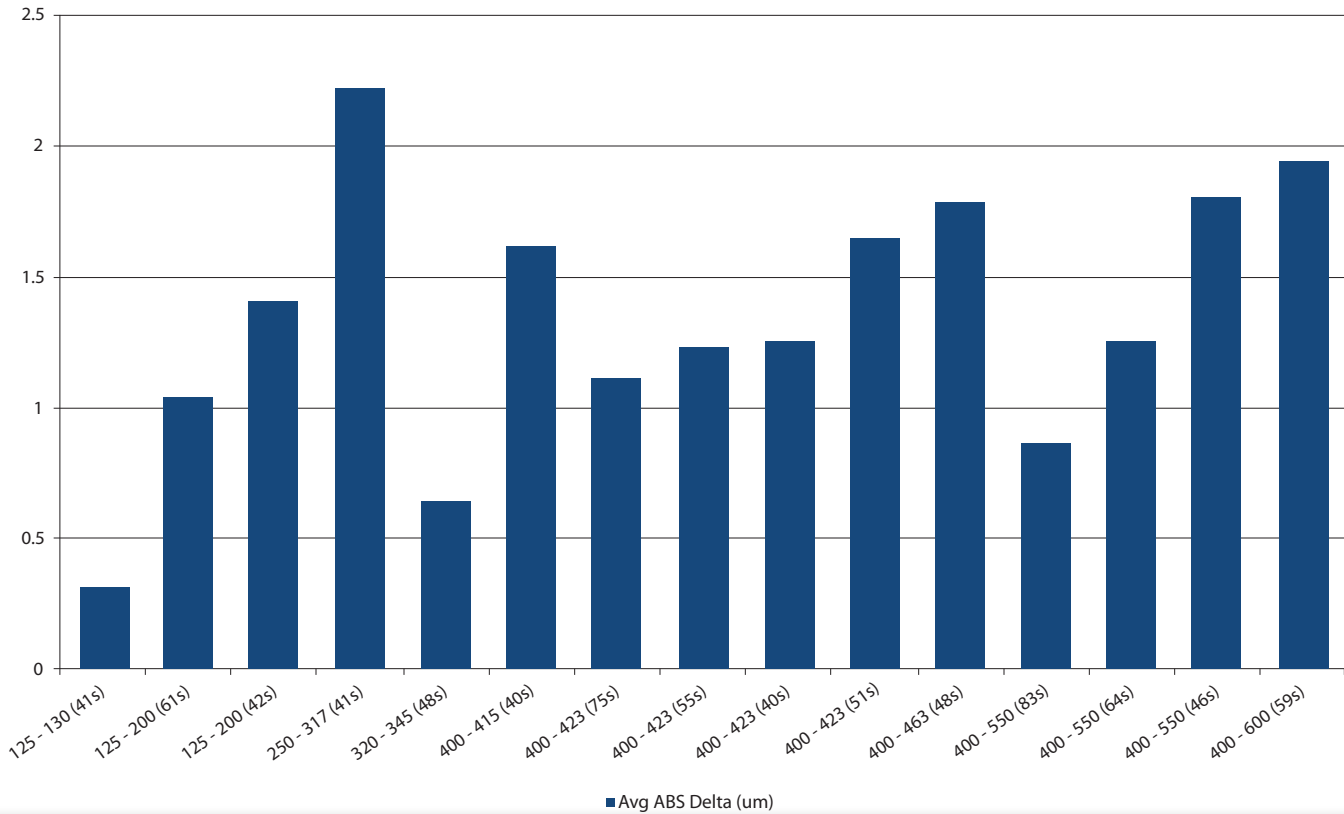


3SAE's Effective Area Radius (EAR)[™] measurement displays the radius along the surface where the light exits the ball lens

LENS FORMING STATION (LFS)

3SAE LFS Average Delta (ABS) from Target Diameter (um)

Fiber Diameter - Ball Diameter (Cycle Time)



Key Features:

- Patented **Ring of Fire®** repeatability and stability is ideally suited for manufacturing or large scale production
- 3SAE proprietary-alloy electrodes couple extended life with high thermal power generation and low maintenance/cost
- The electrodes generate negligible tungsten deposits and require no specialized shielding gas or external vacuum
- 3SAE's Effective Area Radius (EAR)[™] measurement displays the radius along the surface where the light exits the ball lens
- Machine can be rotated to accommodate multiple applications

Technical Specifications:

- Dimensions: 333 (W) x 224 (D) x 353 (H) mm (without adjustable feet)
- Optical: 2 Mega pixel, B&W camera with dual telocentric 2X lens and intensity controllable LED backlight
- Alignment: Automatic X, Y & Z alignment, rotational fiber holder (theta) and fixed vacuum v groove
- Power Source: (1) 12VDC@100W, (1) 24VDC@200W
- Control / Operation: Each system ships with PC system with Microsoft Windows 7 Operating System, Serial communication to 3SAE Lens Forming Station mother board, USB 2.0 video, LFS Executable Software and a 23" – 1920 x 1080 High res wide screen monitor

Product

Lens Forming Station

Standard Package

Product	Part Number	Qty
250um LFS Fiber Holder	ACC-01-0168	1
400um LFS Fiber Holder	ACC-01-0170	1
900um LFS Fiber Holder	ACC-01-0172	1
Electrode Cleaning Disc	CON-06-0006	1
Spare Electrodes	SPT-10-1638	3
Measuring Gauge	SPT-01-3144	1
12V Power Supply	ACC-01-0175	1
24V Power Supply	ACC-01-0147	1

Optional Components

Electrode Cleaning Disc	CON-06-0006	1
Electrodes ROF (Sold Individually)	SPT-10-1638	1
3SAE Thermal Stripper, High Strength	ACC-01-0212	1
Adjustable Extended Rail – Generic F/H		
3SAE Thermal Stripper, High Strength	ACC-01-0215	1
Extended Rail – Generic F/H		
3SAE Automatic Electrode Cleaner	ACC-01-0143	1