

# ML-6000X

*New Generation*

Distributor



**ams TECHNOLOGIES**  
where technologies meet solutions

info@amstechnologies.com  
www.amstechnologies-webshop.com

**Contact us** 

## Digital Dispenser Unveiled!

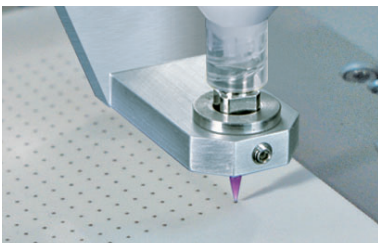
**NEW**



- Correspond to Industry 4.0, various abnormal error output
- Simplified Log function
- Simplified remaining volume detection function
- Variety channel registration feasibility
- Lineup of general purpose and high resolution vacuum specification

### Excellent Dispensing Capability

Installed with air-pulse stabilizing circuit (PAT). Elimination of dispensing volume fluctuation, implementation of excellent dispensing accuracy.



### Equipped with Next-generation Functions

Simplified Log function (Parameters recording: dispensing pressure, vacuum pressure, channel, dispensing mode)

Other Enhanced Features

Simplified remaining volume detection / interval function / channel registration / channel switching / error output / alarm output

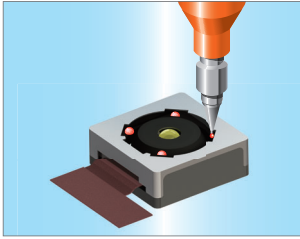


### User-friendly

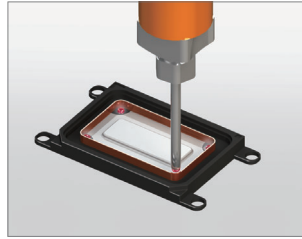
2.4inch Color graphic LCD display for easy setting & operation. Support with multi-language (JPN, ENG, CHN)



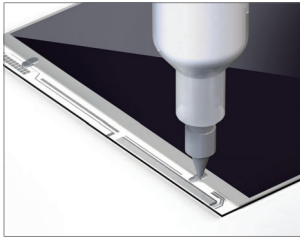
## Dispensing Application



Dispensing UV  
on Camera Module



Speaker Vibration  
Membrane Attachment



Dispensing Ag Paste  
on Touch Panel



Pressure Sensor Potting

## System configuration

Syringe



Desktop & Cartesian robot



Cartridge



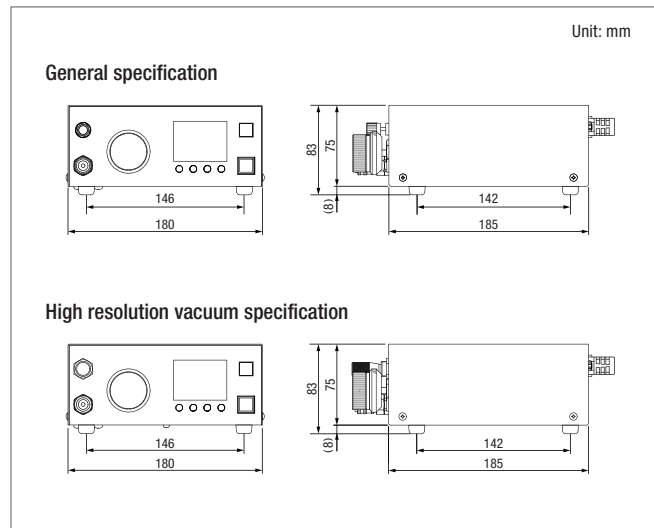
FA dispense machine



## Specification

Description		High Precision Digital Dispenser	
Model	ML-6000X-CTR-VHR	ML-6000X-CTR-GP	
Dispense method	Air-pulse type		
Control system	Microprocessor digital control system		
Display	2.4 inch color graphic LCD		
Dispensing mode	Timed mode, manual mode		
Dispensing pressure adjustment range	5.0 to 700.0 kPa		
Dispensing time setting range	0.001 to 9.999 sec, 0.01 to 99.99 sec, 0.1 to 999.9 sec, 1 to 9999sec (by switching digit on operation screen)		
Vacuum pressure setting range	0 to -20.0 kPa (with air supply of 400 kPa)		
Vacuum pressure control system	Precision needle valve	Standard needle valve	
Main function	Simplified log function, simplified remaining volume detection, interval function, channel registration, channel switching, error output, alarm output, manual/timed mode switching, JPN/ENG/CHN display switching, dispensing count, stopwatch		
Channel number	100 CH		
RS-232C serial communication	1 port		
External input/ output signal (D-sub I/O)	Connector	D-sub25 (socket)	
	Input	Optocoupler input DC12 V, 5 mA Dispensing, channel switching, dispensing mode switching	
	Output	Optocoupler open collector output DC24V, 10mA or below Dispensing complete, discharging, error, alarm	
Air pressure supply range	Max. 800 kPa (Dispensing pressure + 100 kPa or more)		
Rated current & frequency	DC24 V (D-sub25 pin supply), AC100-240 V 50/60 Hz (when using AC adapter)		
Rated voltage allowable variation range	Within nominal voltage $\pm 10\%$		
Power consumption	12 W		
Usage environment (indoor only)	Temperature: 15 to 35°C, Humidity: 5 to 75% (without condensation), Altitude: below 2000 m		
Storage environment	Temperature: 1 to 60°C, Temperature: 25 to 80°C (without condensation)		
External dimensions (excluding protrusion part)	W180×D185×H83 mm		
Weight	3 kg		
Compatible specification	CE marking (low voltage directive, EMC directive) EU RoHS		

## External dimensions diagram



**Safety precautions**  
Please read the instruction manual carefully before use to ensure correct and safe usage.

\*These specifications are subject to change without any notice.  
\*The copyright of this catalog belongs to our company. Reproduction and distribution of the pictures, illustrations and any other information in this catalog to any other media without prior written permission are strictly prohibited; doing so will result in copyright infringement.

MUSASHI ENGINEERING, INC.  
(headquarters) is certified and registered according to the ISO 9001 Quality Management System and the ISO 14001 Environmental Management System.



World Leading Dispenser  
**MUSASHI ENGINEERING, INC.**

Distributor  
**amSTECHNOLOGIES**  
where technologies meet solutions

info@amstechnologies.com  
www.amstechnologies-webshop.com

**Contact us**