

Large Mounting Posts

LMP Series

Note that dimensions in parentheses (mm) reflect metric assembly features

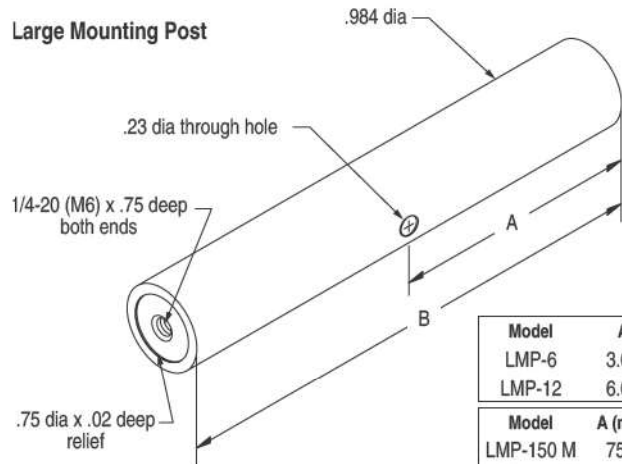


LMP Series



AS-C

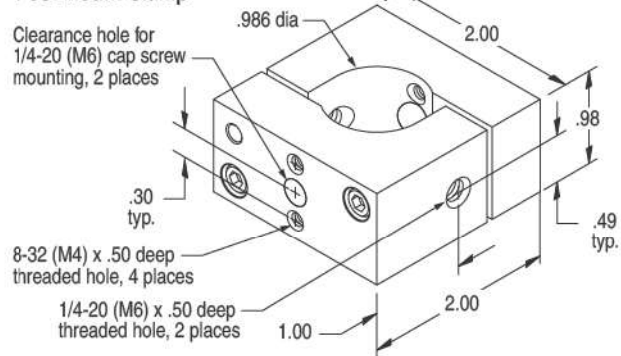
Large Mounting Post



Model	A	B
LMP-6	3.00	6.00
LMP-12	6.00	12.00

Model	A (mm)	B (mm)
LMP-150 M	75.0	150.0
LMP-300 M	150.0	300.0

Post Mount Clamp



Product Features

- High quality support post
- 1/4-20 tapped holes on each end
- Cross drilled for positive tightening
- Vacuum compatible versions available upon request

Related Products

AS series aluminum spacers	110
MX110 micromanipulator	156
MX6500 micromanipulator	165
MX7500 micromanipulator	170

Order Information

large mounting post, 6.0 inch	LMP-6
large mounting post, 12.0 inch	LMP-12
large mounting post, 150.0 mm	LMP-150
large mounting post, 300.0 mm	LMP-300
post clamp, nominal 1 inch post	AS-C
post clamp, metric model	AS-C-M

Large Mounting Posts

Our LMP series large mounting rods are a solid solution for supporting platforms or other mechanical hardware. The LMP large mounting post can be directly mounted to an isolation table top, PSR series platform support rods, or AS series spacers. LMP series mounting rods are cross drilled to accept a 3/16 hex wrench. This cross hole enables secure tightening to AS spacers, isolation table tops, or other mechanical devices.

The LMP's 0.984 diameter is the same as the mounting post for MX110s, MX6500s, and MX7500s. When used as a support leg for a fixed-stage platform, the LMP-6 can be used to attach any of these manipulators to create a rigid integrated mounting point.

Post Mount Clamp

The AS-C post clamp is designed to mount to our AS series and LMP series posts. The symmetrical design has a 1/4-20 clearance, 8-32 and 1/4-20 tapped holes conveniently located to attach a wide variety of devices. The clamp design will accommodate diameters from .950 inch to 1.25 inch. The AS-C is available in a metric version by adding "-M" to the Model number.