

CureRight Quick Start Software Manual for ILT800 & ILT850



InternationalLight
TECHNOLOGIES

10 Technology Drive
Peabody, MA 01960
Tel: 978-818-6180
www.intl-lighttech.com



Distributor

amsTECHNOLOGIES
where technologies meet solutions

info@amstechnologies.com
www.amstechnologies-webshop.com

Contact us 

Thank you for purchasing a CureRight series light meter from International Light Technologies.

Installation of CureRight program and data download software:

Download the software from the ILT website on the ILT800 page under Downloads:

https://www.intl-lighttech.com/sites/default/files/ilt_datelight_cureright_software_suite_1.1.2_includes_ilt800_firmware_1.1.1.4.zip

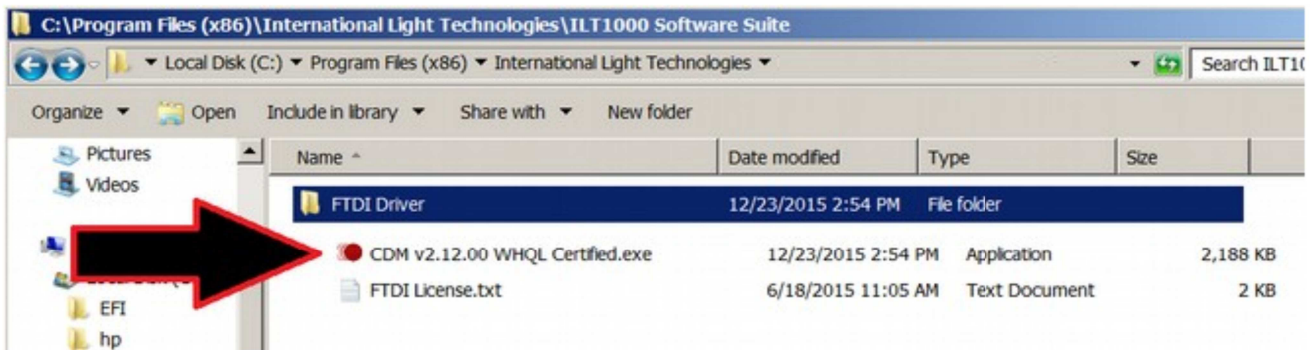
Click on the ILT Datalight CureRight Software suite windows installer package

The file Datalight CureRight.exe will install with no further prompts and the application icon will be placed on the desk top.

Install the FTDI Drivers:

Device drivers are located in C, Program Filesx 86, International Light Technologies, ILT DataLight CureRight Sogware suite, FTDI folder.

To install drivers double click driver CDM.....exe



Set Up:

Turn on your meter. Press Button 1

Place meter in Data Ready Mode. Press 4 options, then 3 info, You are now in Data Ready Mode.

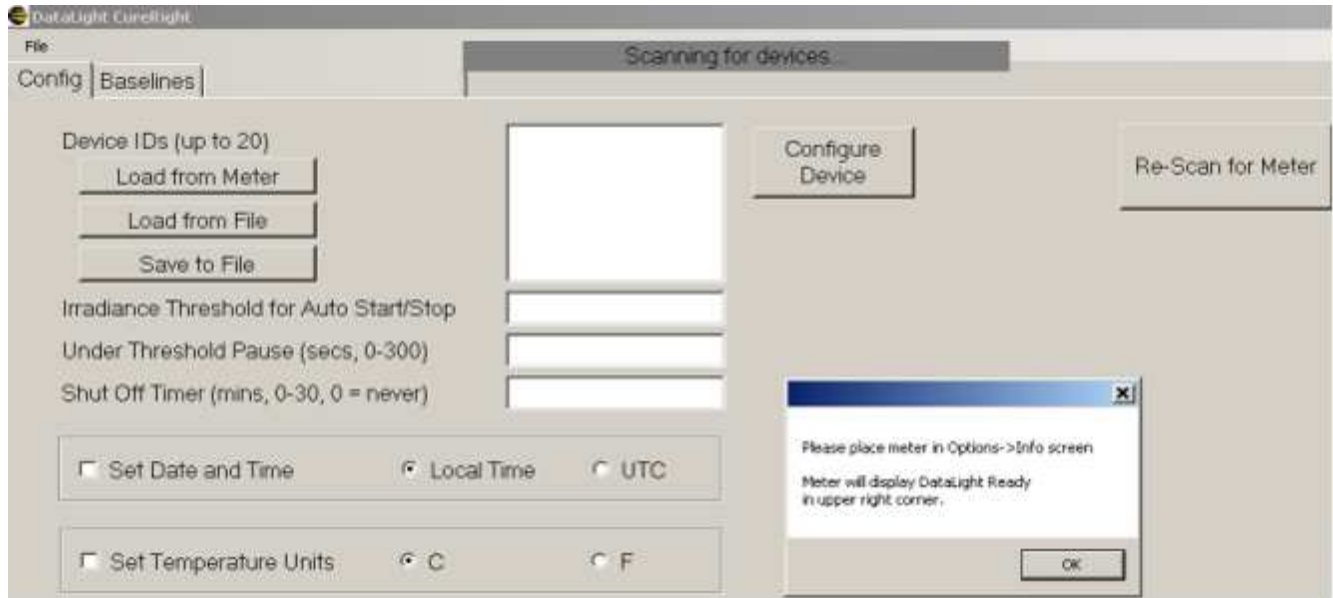
Plug in One Meter. use the supplied USB micro cable or a good quality USB Micro cable.

Note: CureRight can only access 1 meter at a time.

(Warning, Oversized, or low quality USB cables and/ or using excessive force to plug in a USB cable can cause damage to the USB port)

Initiate the software. Click on the DataLight CureRight Applications icon on the desk top.

The opening screen appears as follows:



(note you can perform these steps in any order, If you initiate software first, when see a no devices connected error message, simply plug in the meter, turn it on, place in Data Ready Mode and then “Re-Scan for Meter” in the software.)

The Config Tab

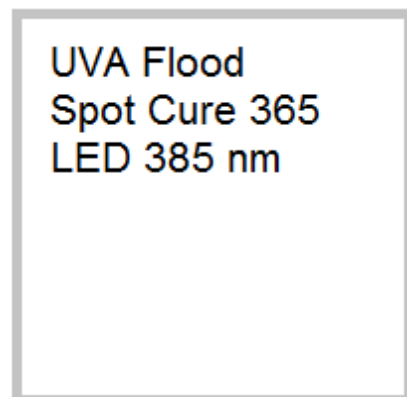
Device ID’s (up to 20): Results are read from the meter and display the previously programmed Device ID’s. →

Load from File will load the list that was previously saved with the **Save to File** option noted below.

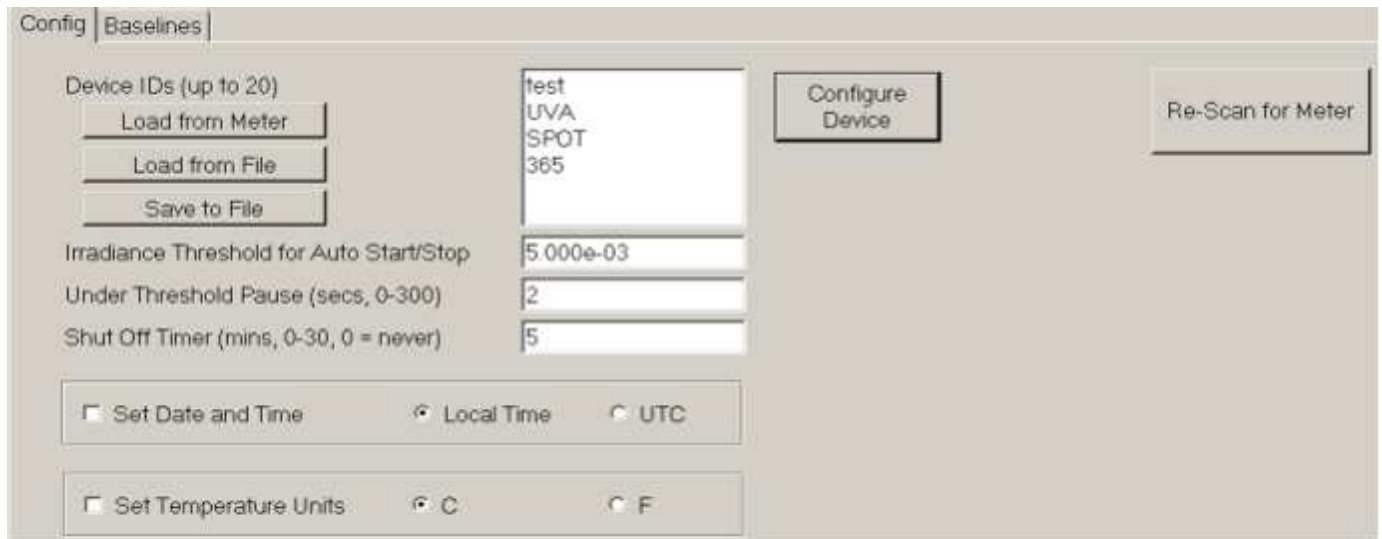
Save to File stores the current values shown in the box

Note: Save/Load to file facilitates the programming of multiple ILT800 units, 1 at a time.

Create ID: Type each ID name in the square white box and hit return to enter a new line until all ID’s are entered. Once complete hit configure device.



Programming features in the config tab:



Config | Baselines

Device IDs (up to 20)

Load from Meter

Load from File

Save to File

Irradiance Threshold for Auto Start/Stop: 5.000e-03

Under Threshold Pause (secs, 0-300): 2

Shut Off Timer (mins, 0-30, 0 = never): 5

Set Date and Time Local Time UTC

Set Temperature Units C F

Configure Device

Re-Scan for Meter

- **Irradiance Threshold for Auto Start/Stop:** Enter Value in scientific notation.
- **Under Threshold Pause** time: Enter allowable time in seconds.
- **Shut Off Timer:** Enter time in minute, 0 (never) or between
- **Set Date and Time:**
 - Use the same time as the computer running the CureRight software.
 - The time can be set as either Local time or UTC/GMT
- **Set Temperature Units**

Configure: loads the ILT800/ILT850 meter with the parameters entered.

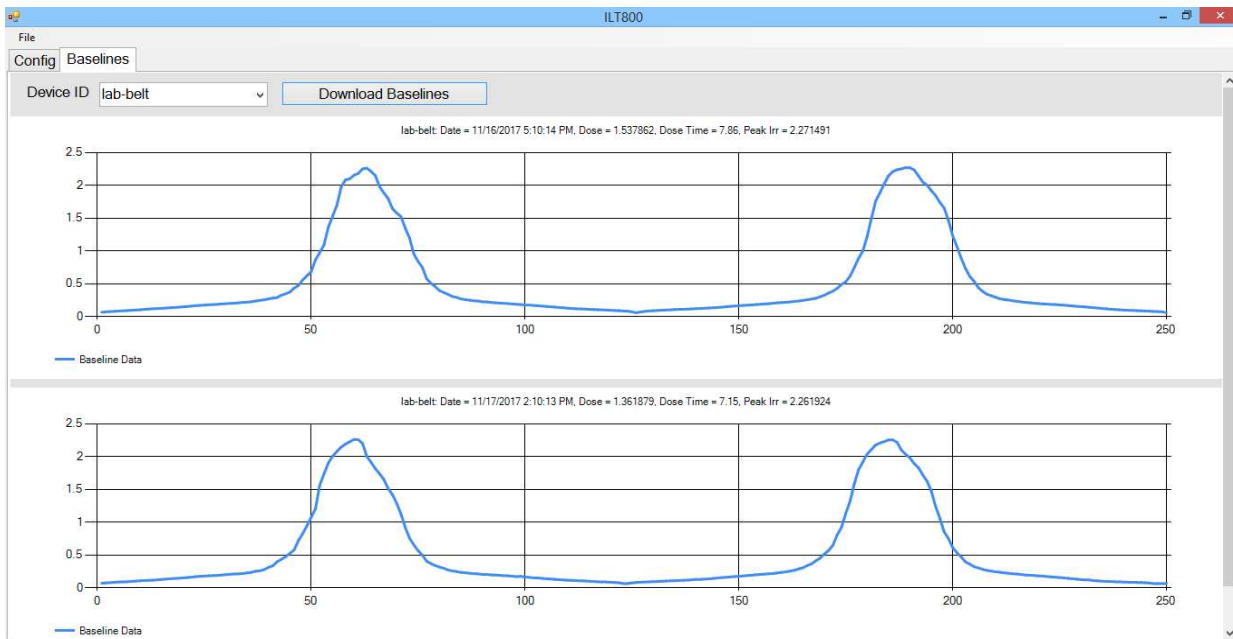
Re-Scan for Meter: Used if there are communication issues or to recognize the next meter for programming multiple systems. **Note that only one meter should be connected to the computer at a time.**

The Baseline Tab

The Baselines tab will download all the baselines (saved readings) for the selected Device ID. Use the drop down box next to Device ID to make your selection.

Click on Download Baselines to initiate downloading of all readings saved under the selected device ID.

Right-clicking any graph gives the option of copying the graph to the clipboard, saving the graph data to a CSV file, or saving all the data from the current download to a CSV file.



Additional Software testing options.

Note: The Meter App. In ILT's DataLight III software package can also be used to capture data live to your PC like our ILT2400 handheld ILT5000 Research and ILT1000 datalogging radiometers.

Datalight III can be downloaded from the ILT website in the **documents and downloads** tab on the ILT2400 Radiometers Pages (as well as the ILT5000 and ILT1000 pages)

<https://www.intl-lighttech.com/products/ilt2400-hand-held-light-meter>

Distributor



ams TECHNOLOGIES
where technologies meet solutions

info@amstechnologies.com
www.amstechnologies-webshop.com

Contact us 