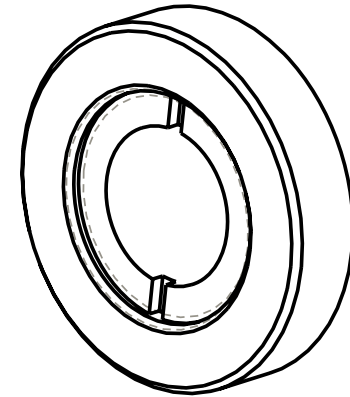
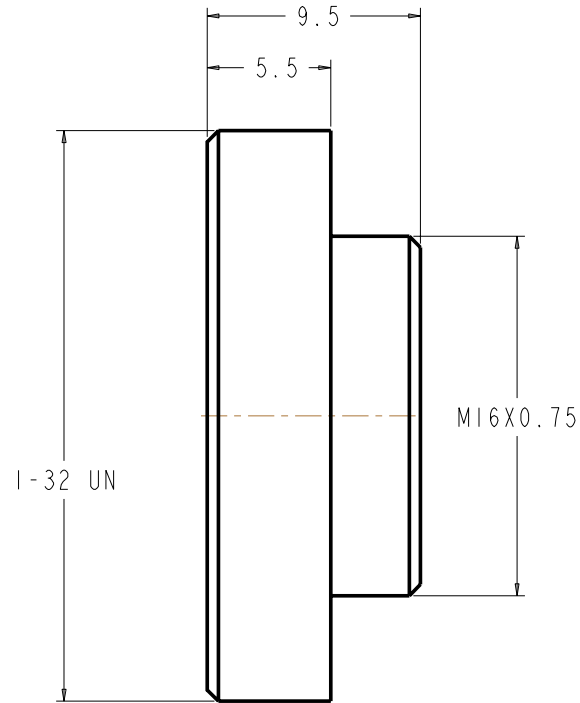


# ACC-LCS-F-11 Focusing Module Installation Drawing

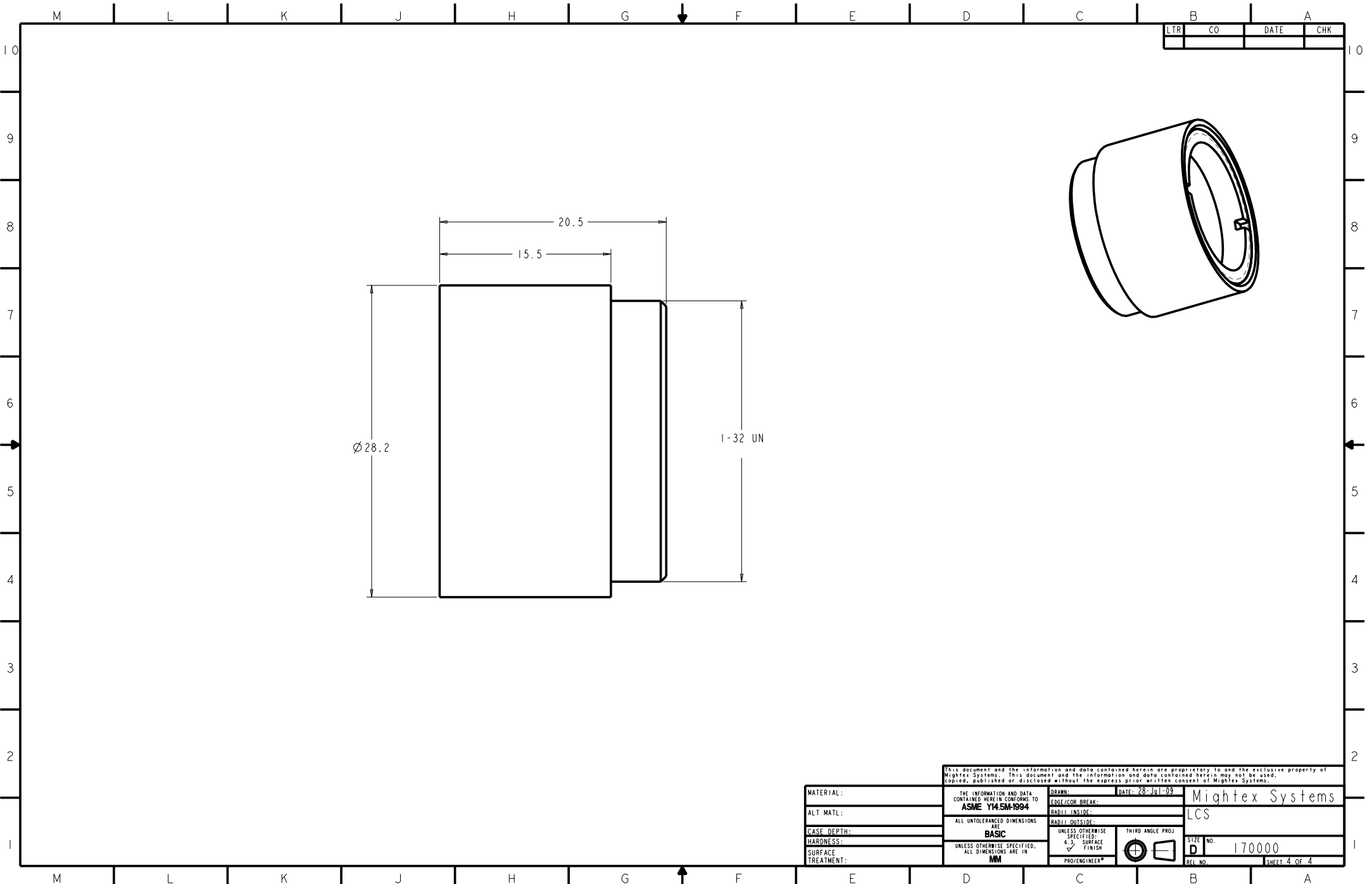


LTR	CO	DATE	CHK

This document and the information and data contained herein are proprietary to and the exclusive property of Mightex Systems. This document and the information and data contained herein may not be copied, published or disclosed without the express prior written consent of Mightex Systems.

MATERIAL:	THE INFORMATION AND DATA CONTAINED HEREIN CONFORMS TO ASME Y14.5M-1994	DRAWN:	DATE: 14-JUN-11	Mightex Systems FOCUSING MODEL
ALT MATL:	ALL UNTOLERANCED DIMENSIONS ARE BASIC	EDGE/COR BREAK:	RADII INSIDE:	
CASE DEPTH:	UNLESS OTHERWISE SPECIFIED, ALL DIMENSIONS ARE IN MM	RADII OUTSIDE:	UNLESS OTHERWISE SPECIFIED: 6.3 SURFACE FINISH	THIRD ANGLE PROJ
HARDNESS:		PRO/ENGINEER*		SIZE NO. D 171000
SURFACE TREATMENT:				REL NO. SHEET 3 OF 3

# ACC-LCS-F-22 Focusing Module Installation Drawing

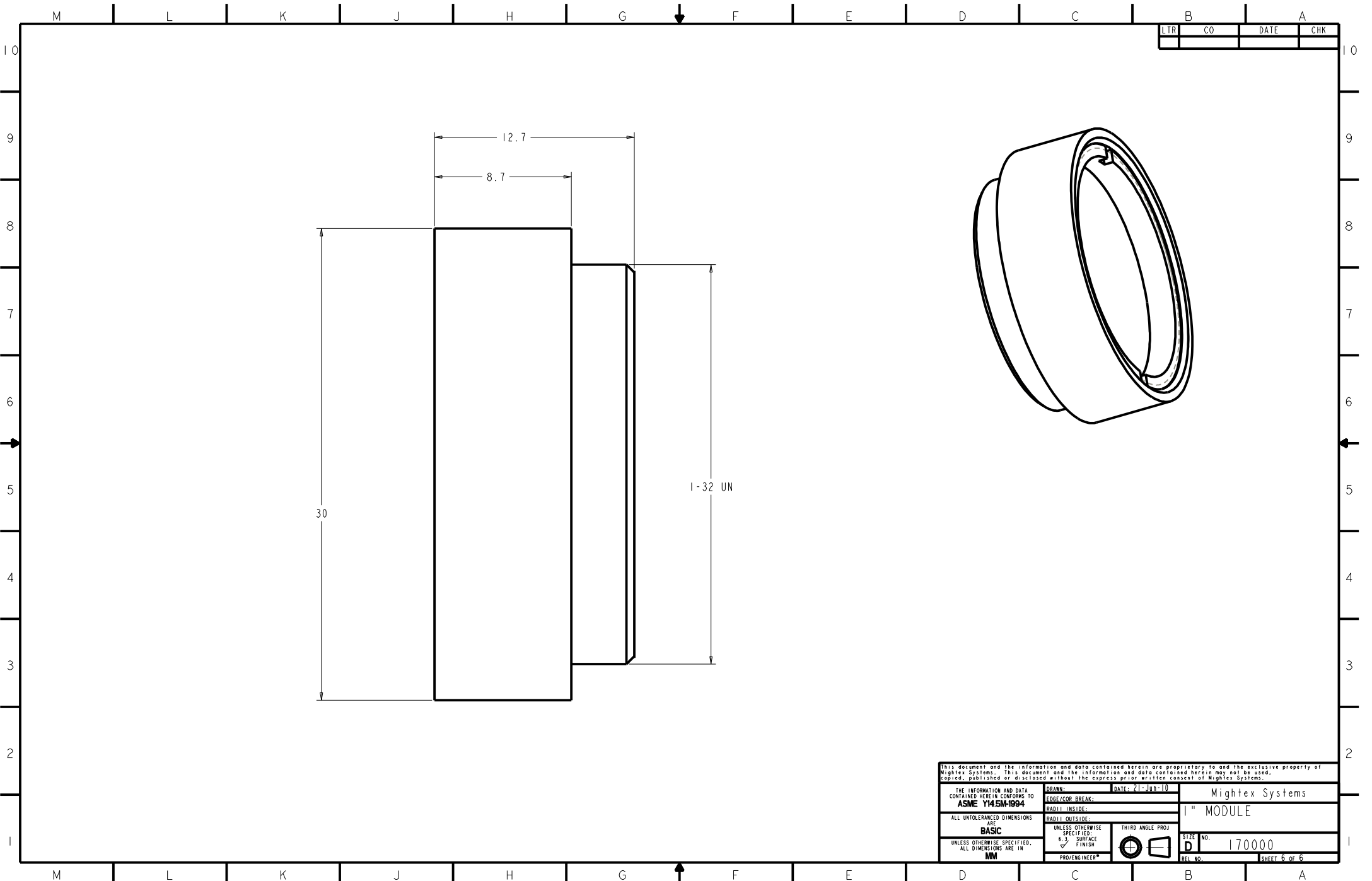


LTR	CO	DATE	CHK

This document and the information and data contained herein are proprietary to and the exclusive property of Mightex Systems. This document and the information and data contained herein may not be used, copied, published or disclosed without the express prior written consent of Mightex Systems.

MATERIAL:	THE INFORMATION AND DATA CONTAINED HEREIN CONFORMS TO <b>ASME Y14.5M-1994</b>	DRAWN:	DATE: 28-Jul-09	Mightex Systems
ALT MATL:	ALL UNTOLERANCED DIMENSIONS ARE <b>BASIC</b>	EDGE/COR BREAK:		LCS
CASE DEPTH:	UNLESS OTHERWISE SPECIFIED, ALL DIMENSIONS ARE IN <b>MM</b>	RADII INSIDE:		SIZE NO. <b>D 170000</b>
HARDNESS:		RADII OUTSIDE:	UNLESS OTHERWISE SPECIFIED: 6.3 SURFACE FINISH	BEL NO. <b>SHEET 4 OF 4</b>
SURFACE TREATMENT:		THIRD ANGLE PROJ:	PRO/ENGINEER*	

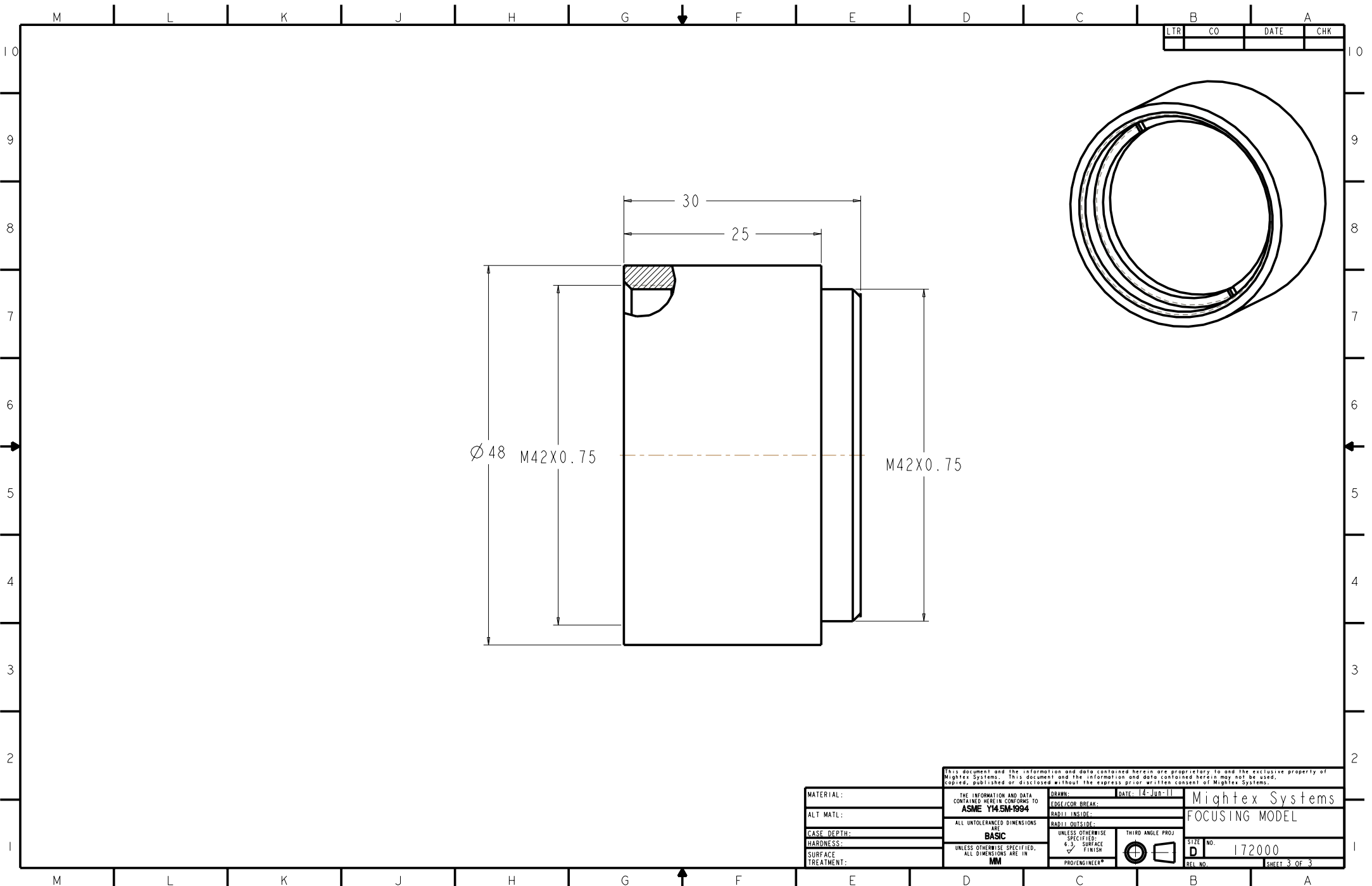
# ACC-LCS-F-22-100 Focusing Module Installation Drawing



LTR	CO	DATE	CHK

<small>This document and the information and data contained herein are proprietary to and the exclusive property of Mightex Systems. This document and the information and data contained herein may not be copied, published or disclosed without the express prior written consent of Mightex Systems.</small>			
THE INFORMATION AND DATA CONTAINED HEREIN CONFORMS TO <b>ASME Y14.5M-1994</b>	DRAWN: _____ DATE: 21-JUN-10	Mightex Systems	
ALL UNTOLERANCED DIMENSIONS ARE <b>BASIC</b>	EDGE/COR BREAK: _____ RADII INSIDE: _____ RADII OUTSIDE: _____	1" MODULE	
UNLESS OTHERWISE SPECIFIED, ALL DIMENSIONS ARE IN <b>MM</b>	UNLESS OTHERWISE SPECIFIED: 6.3 SURFACE FINISH PRO/ENGINEER*	THIRD ANGLE PROJ 	SIZE NO. <b>D</b> 170000 DEL NO. SHEET 6 of 6

ACC-LCS-F-38 Focusing Module Installation Drawing

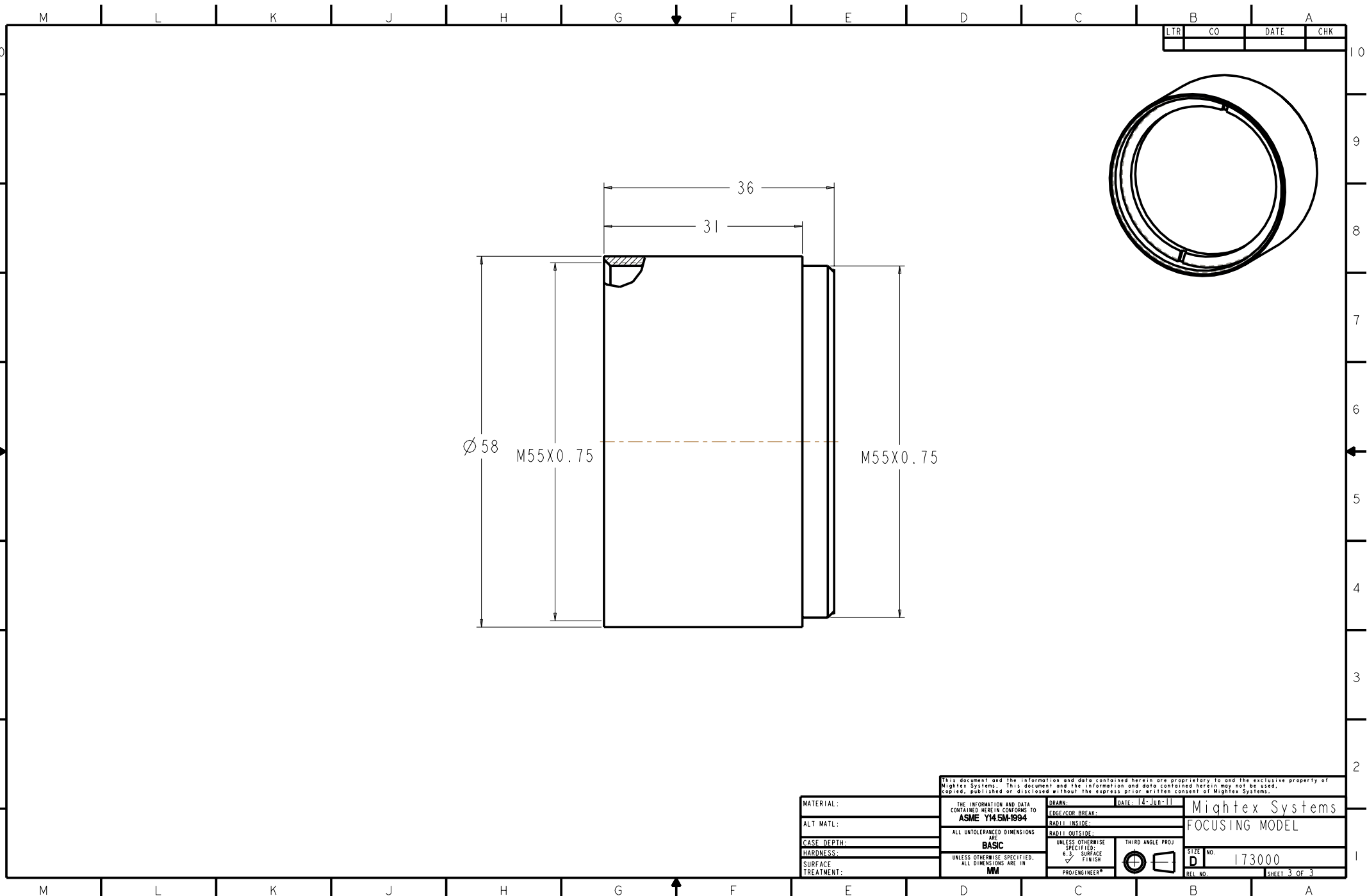


LTR	CO	DATE	CHK

This document and the information and data contained herein are proprietary to and the exclusive property of Mightex Systems. This document and the information and data contained herein may not be copied, published or disclosed without the express prior written consent of Mightex Systems.

MATERIAL:	THE INFORMATION AND DATA CONTAINED HEREIN CONFORMS TO <b>ASME Y14.5M-1994</b>	DRAWN:	DATE: 14-JUN-11	Mightex Systems FOCUSING MODEL
ALT MATL:	ALL UNTOLERANCED DIMENSIONS ARE <b>BASIC</b>	EDGE/COR BREAK:	RADII INSIDE:	
CASE DEPTH:	UNLESS OTHERWISE SPECIFIED, ALL DIMENSIONS ARE IN <b>MM</b>	RADII OUTSIDE:	THIRD ANGLE PROJ	SIZE NO. <b>D 172000</b>
HARDNESS:		UNLESS OTHERWISE SPECIFIED: 6.3 SURFACE FINISH		BEL NO. SHEET 3 OF 3
SURFACE TREATMENT:		PRO/ENGINEER*		

ACC-LCS-F-48 Focusing Module Installation Drawing



LTR	CO	DATE	CHK

This document and the information and data contained herein are proprietary to and the exclusive property of Mightex Systems. This document and the information and data contained herein may not be used, copied, published or disclosed without the express prior written consent of Mightex Systems.

MATERIAL:	THE INFORMATION AND DATA CONTAINED HEREIN CONFORMS TO ASME Y14.5M-1994	DRAWN:	DATE: 14-JUN-11	Mightex Systems
ALT MATL:	ALL UNTOLERANCED DIMENSIONS ARE BASIC	EDGE/COR BREAK:		FOCUSING MODEL
CASE DEPTH:	UNLESS OTHERWISE SPECIFIED, ALL DIMENSIONS ARE IN MM	RADII INSIDE:		SIZE NO. 173000
HARDNESS:		RADII OUTSIDE:		D
SURFACE TREATMENT:		UNLESS OTHERWISE SPECIFIED: 6.3 SURFACE FINISH	THIRD ANGLE PROJ	BEL NO. SHEET 3 OF 3
		PRO/ENGINEER*		