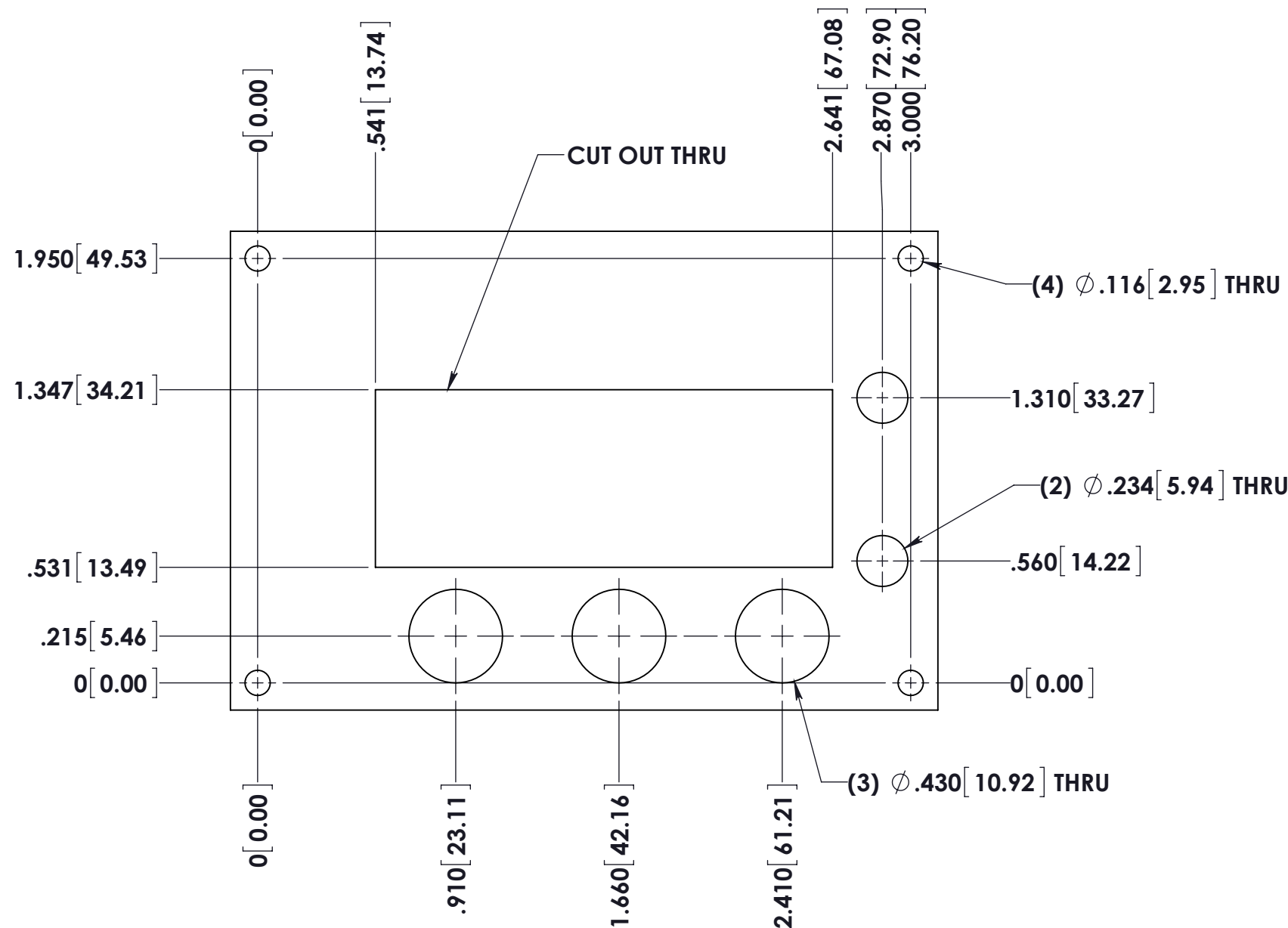
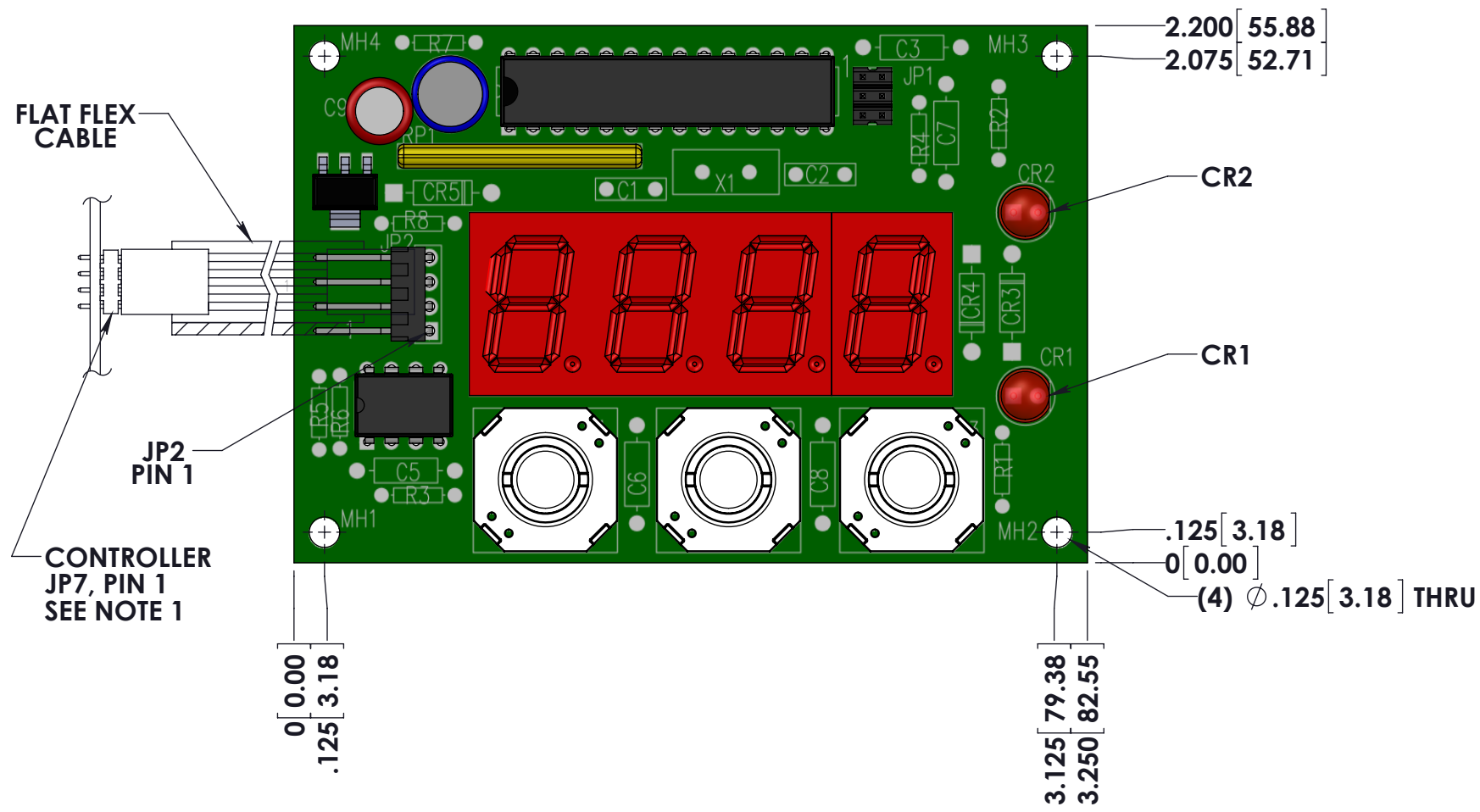
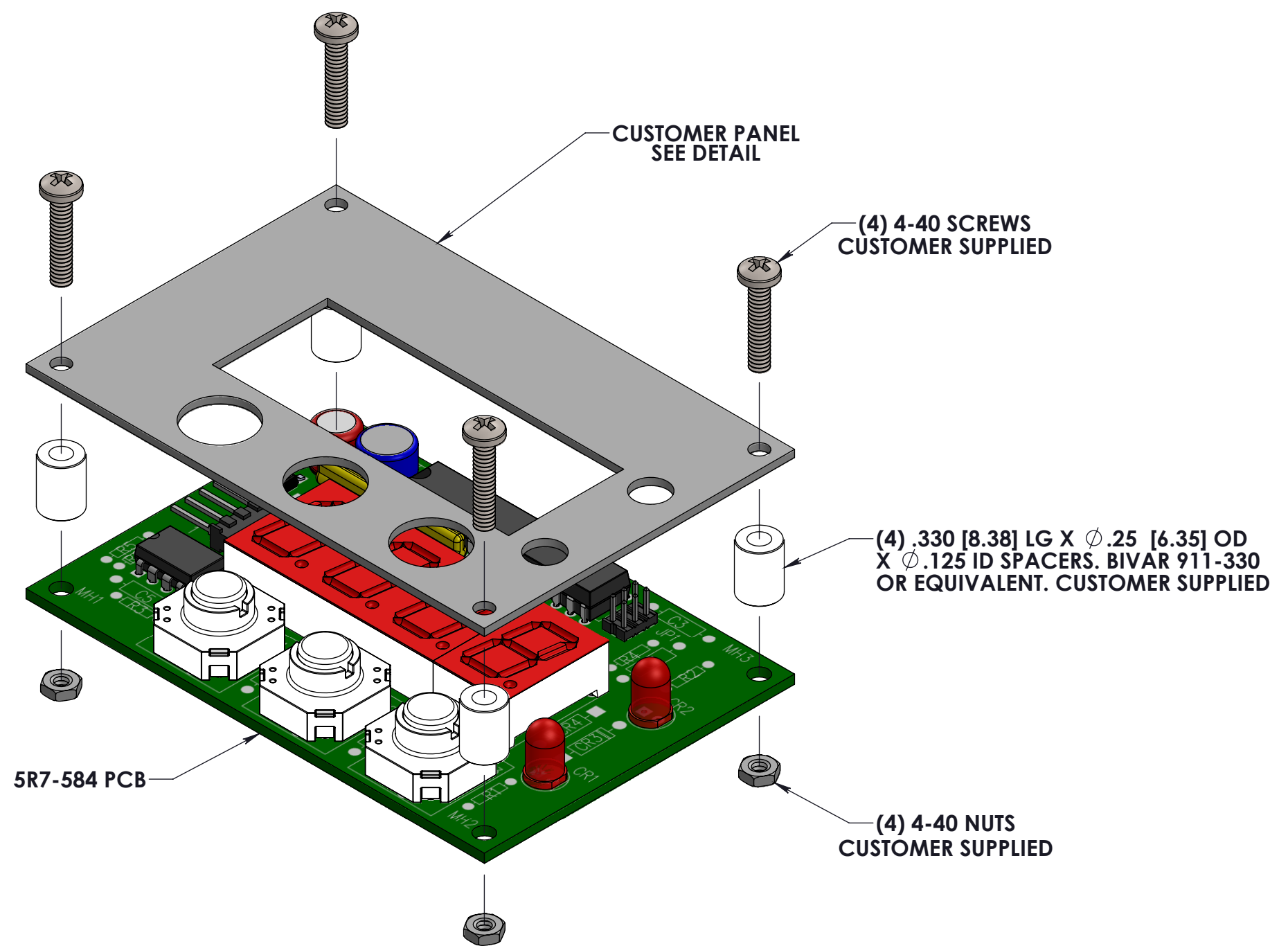


1. CONNECT CABLE END TO CONTROLLER HEADER JP7. TAKE CARE TO CONNECT CIRCUIT 1 (SHADED CONDUCTOR) TO JP7, PIN1.



CUSTOMER PANEL CUTOUT DETAIL
.050 [1.27] THICK MATERIAL



5R7-584 WITH FACE PLATE EXPLODED ASSEMBLY

CONTROL PANEL FUNCTIONS:
 SW1 INCREASE SET POINT
 SW2 DECREASE SET POINT
 SW3 DISPLAY MODE (CONTROL/SET)
 CR1 CONTROL TEMP DISPLAY MODE
 CR2 SET TEMP DISPLAY MODE

JP2 CONNECTS TO 5R7-582
 PIN 1 V-
 PIN 2 RS485- } NOT ISOLATED
 PIN 3 RS485+ }
 PIN 4 V+ (6VDC TO 28VDC)

<<< RoHS COMPLIANT >>>

| REVISIONS | | | | | | |
|-----------|-----|-------------|----|------|-------|------|
| ZONE | REV | DESCRIPTION | BY | DATE | APPR. | DATE |
| | | | | | | |

| | | |
|-------------------------------|------------|---------|
| DIMENSIONS ARE IN INCHES [MM] | SIGNATURES | DATE |
| 2 PLACE DEC. | DRAWN: TAS | 1/26/15 |
| 3 PLACE DEC. ±.010 [0.25] | CHECK: DS | 1/30/15 |
| FRACTIONS | APPR: | |
| ANGLES | APPR: | |
| FINISH: | MATERIAL: | |

| | | | |
|---|-------------------|-----------------|------------------|
| OVEN INDUSTRIES INC. | | | |
| P. O. BOX 290, MECHANICSBURG, PA. 17055 | | | |
| CUSTOMER DRAWING | | | |
| SIZE C | FSCM NO. 21302 | DWG NO. | CDR-00454 |
| SCALE 1:1 | MODEL 5R7-584 | SHEET 1 OF 1 | |

Distributor

 where technologies meet solutions
 info@amstechnologies.com
 www.amstechnologies-webshop.com
 Contact us

