

CONCENTRICITY



KONCENTRIK-V2 Connector

High precision Concentricity measurements

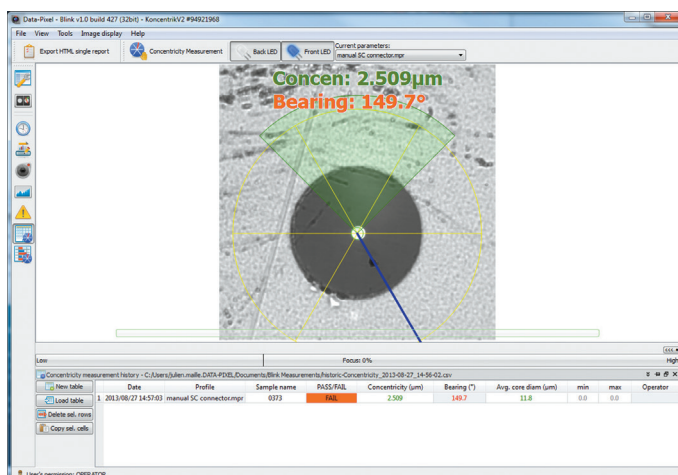
Koncentrik-V2 is a modular measurement system.

Fiber or ferrule eccentricity measurements can be performed using different mechanical modules.

Koncentrik-V2 Connector is dedicated to eccentricity measurement of **fiber core relative to ferrule envelope**.

The unit is able to measure the concentricity and indicate the angular value of maximum eccentricity.

With the Blink software platform, Koncentrik-V2 is an **easy to use measurement unit with database connectivity**.

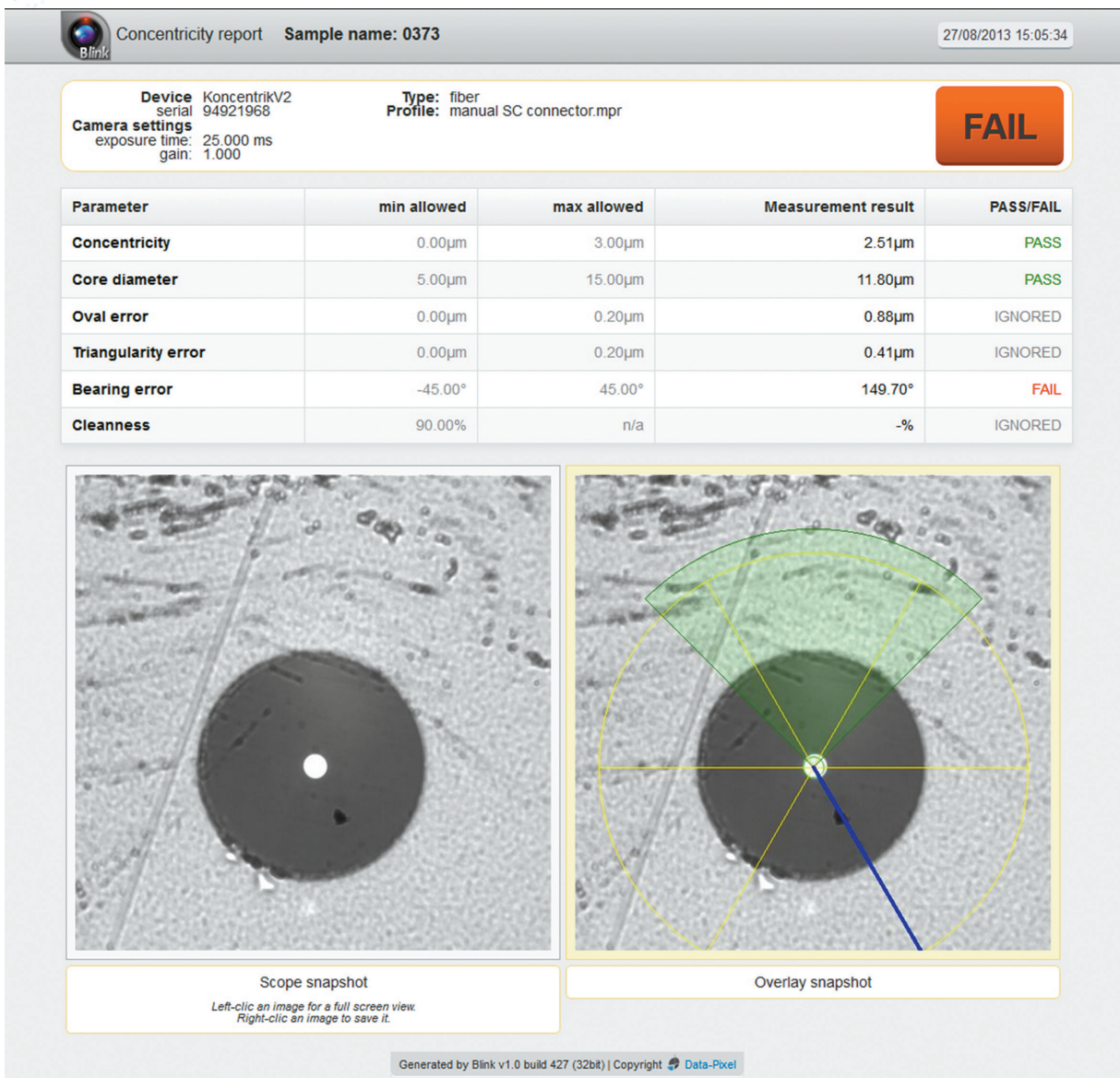


KEY FEATURES:

- Measures diam. 2.50 mm and 1.25 mm PC type connectors
- APC connectors option available
- Ferrule end-face visual inspection at x 400 magnification
- Accurate and repeatable measurements
- User adjustable quality level for high-speed measurements
- Easy calibration Blink Concentricity software
- Measurement data exported in standard CSV format
- Statistics on measurements available
- Compatible with Desktop PC, laptop, tablet PC
- Measurement report in HTML format
- Compatible with desktop PC, laptop, tablet PC

SPECIFICATIONS:

Eccentricity (µm) :	0 to 100
Indexing measurement (degrees) :	0 to 360
Measurement speed (sec.) :	10 (depends on user)
Magnification :	X 400
Ferrule outside diameter (mm) :	1.00 to 3.17
Fiber core diameter (µm) :	5 to 400
Power source :	12V
Dimensions H x W x L (mm) :	120 x 150 x 260
Weight (kg) :	4.5



ORDER OPTIONS:

Konkentrik Connector unit with : - Blink Concentricity - 2 holders for patchcords	71-KKCN-V2-M10-00
Holder for patchcord 1.25mm, sleeve-type	30-HL-000719
Holder for patchcord 2.50mm, sleeve-type	30-HL-000720
Holder for patchcord 1.25mm, VGroove-type	30-HL-000724
Holder for patchcord 1.60mm, VGroove-type	30-HL-000727
Holder for patchcord 2.00mm, VGroove-type	30-HL-000726
Holder for patchcord 2.50 mm, VGroove-type	30-HL-000723
Holder for patchcord 3.17mm (SMA), VGroove -type	30-HL-000725