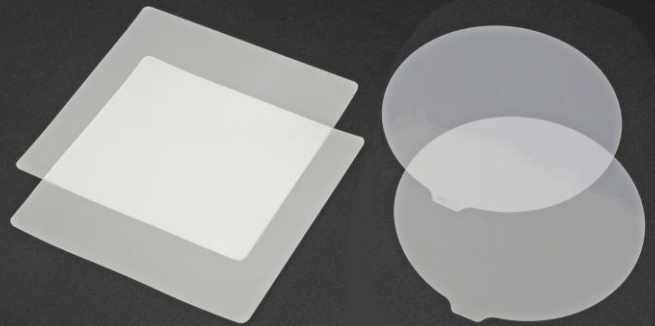


MPO polishing with a finishing quality equivalent to that of single fiber connector and a Coredip value of “0”

Final Polishing Film for MPO **ADS-MPO**

ADS-MPO is a new generation polishing film that has been improved for MPO connectors to realise a finishing quality equivalent to that of single fiber polish, and also a Coredip value of “0” (convex shape) in multi-mode fiber.



Ideal for final polishing of MPO connector end face

Polishes MPO connector end face leaving no scratches or dirt. At the same time, its stable polishing power ensures long life.

A multi-mode fiber Coredip value of “0”

Can polish to a convex shape to eliminate dips in the core (Coredip) which particularly affects the optical characteristics (IL/RL) of multi-mode fiber.

Provides a low return loss comparable to single fiber connectors

Realizes a low return loss comparable to single connectors by suppressing subsurface damaged layer to a minimum.

Specifications

Type	ADS-MPO Final Polishing Film
Standard Sizes	Disk type : 127mm (5inch)dia. (100 sheets/set) Square type : 140mm (5.5inch)×140mm (5.5inch) (100 sheets/set)
Film color	MPO: White semi-transparent (“MPO” is engraved on the periphery of the disk type and in one spot of the square type)
Base Thickness	75μm (3mil)
Ferrule	MPO: all types; Material: PPS; Angle: 0deg/8deg
Compatible Fiber	Multi-mode : OM1, OM2, OM3, OM4, GI50, GI62.5, etc. Single-mode : OS1, OS2, SM, etc.

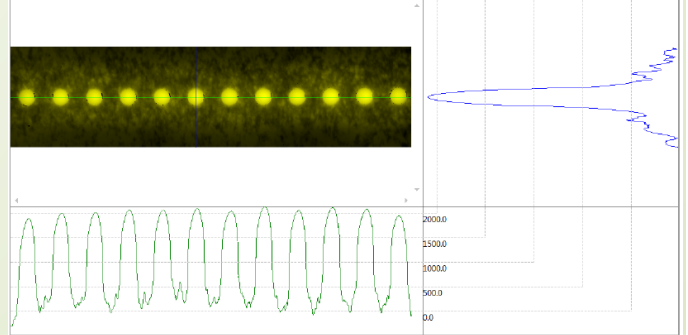
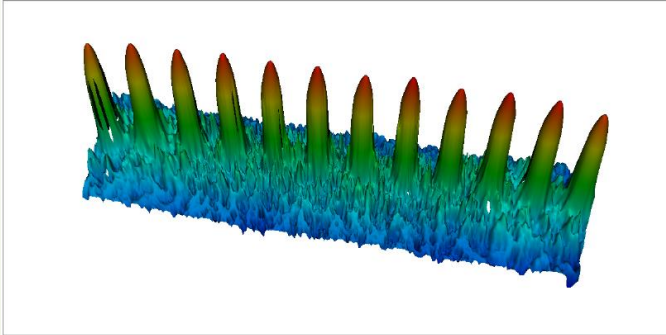
Measurement Parameter	Units	Pass/Fail Limits		Measured Value	Verdict
		Min	Max		
Ferrule Radius of Curvature X	mm	-2000.00*	2000.00*	46041.17	PASS
Ferrule Radius of Curvature Y	mm	5.00		85.09	PASS
Tilt Angle X	°	-0.2000	0.2000	-0.0682	PASS
Tilt Angle Y	°	-0.2000	0.2000	-0.1396	PASS
Dome Height	nm			595.17	N/A

* - Pass value must be less than Min and greater than Max

Measurement Parameter	Units	Pass/Fail Limits		Measured Value	Verdict
		Min	Max		
Max - Min	nm			258.28	N/A
Max Adj Diff	nm			136.93	N/A
Minus Coplanarity	nm	0.00	250.00	136.35	PASS
Coplanarity Plane Angle X	°			-0.0866	N/A

Measurement Parameter	Units	Pass/Fail Limits		Fiber Number / Measured Value / Verdict											
		Min	Max	1	2	3	4	5	6	7	8	9	10	11	12
Height	nm	1000	3500	1641.74	1778.67	1785.68	1834.32	1833.95	1861.69	1840.37	1900.02	1832.38	1891.45	1867.28	1732.23
ROC	mm	1	5	2.47	2.61	2.55	2.50	2.56	2.57	2.85	2.49	2.62	2.63	2.74	2.60
Core Dip	nm	0	100	-159	-144	-157	-156	-155	-157	-130	-157	-151	-153	-135	-149

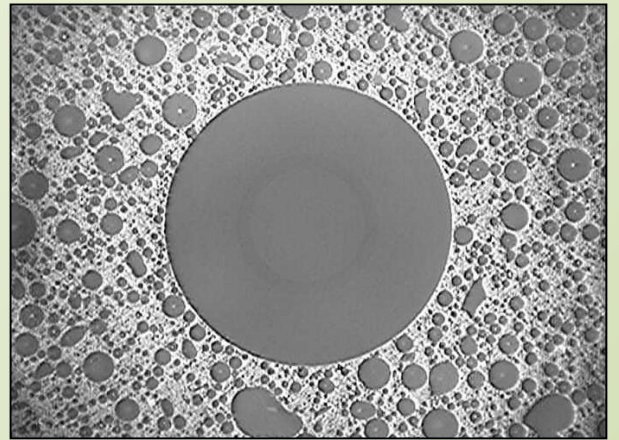
Coredip: + value = concave; - value = convex



Polisher: ATP-3000 polisher
(independent pressurization)

Dimension
EASYCHECK EC400K

	Process	Polish Film Polish Fluid	Time (sec)
1	Adhesive removal	AAS-GC16A-R140-12 Water	15 +30
2	Flat surface polish	AAS-GC03A-R140-12 Water	30
3	Protrusion Polish	AAS-RFZZA-140-140 AMS-EHZZ-1L	240
4	Final Polish	ADS-MPO-140 Water	15



※ All company names, product names, etc., indicated herein are trademarks or registered trademarks of each respective company.
 ※ Please understand that all comments and data recorded herein may be subject to change without prior notification.

For more information

http://www.ntt-at.com/product/Polishing_film/

