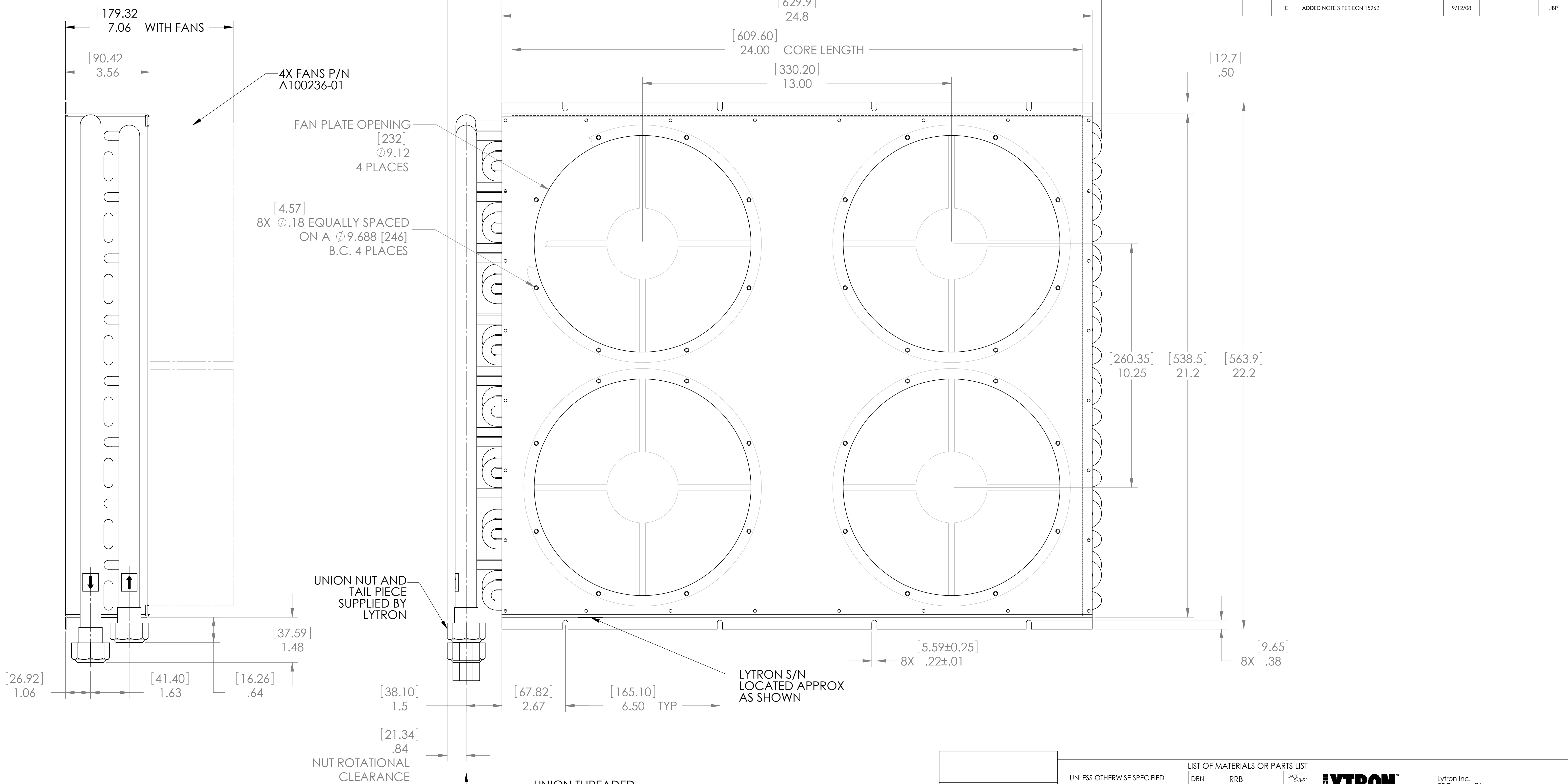


THIS DOCUMENT IS THE PROPERTY OF LYTRON, INC. AND REPRESENTS A PROPRIETARY ARTICLE ON WHICH LYTRON, INC. RETAINS ANY AND ALL PATENT AND OTHER RIGHTS, INCLUDING EXCLUSIVE RIGHTS OF USE AND/OR MANUFACTURE AND/OR SALE. POSSESSION OF THIS DOCUMENT DOES NOT CONVEY ANY PERMISSION TO REPRODUCE THE DOCUMENT OR MANUFACTURE THE ARTICLE OR ARTICLES SHOWN THEREIN.

REVISIONS						
ZONE	REV.	DESCRIPTION	DATE	DES	CHKD	APP'D
	A	PRELIMINARY	1-2-91			TAS
	B	REL PER ER910509	5-7-91			TAS
	C	REL PER ECN 5027/6000	12-15-96	JFP		APT
	D	REDRAWN AND REV PER ECN 14842	5/9/07	JBP		PRV
	E	ADDED NOTE 3 PER ECN 15962	9/12/08			JBP



- NOTES:
- 1) FINISH: SEMIGLOSS ACRYLIC BLACK PAINT PER PROCEDURE #471. PLUG ENDS AND MASK I/O FITTINGS.
  - 2) DIMENSIONS IN [ ] ARE IN MILLIMETERS.
  - 3) PRESSURE TEST TO 150 PSIG PER LYTRON PROCEDURE 4.9.9.

REF: 6340G1		NEXT ASSY		USED ON		APPLICATION	
LIST OF MATERIALS OR PARTS LIST							
UNLESS OTHERWISE SPECIFIED	DRN	RRB	DATE	Lytron Inc. 55 Dragon Ct. Woburn Ma. 01801			
ANGULAR DIMENSIONS ARE $\pm$ 1°	CHK'D	TAS	5-7-91	DRAWING TITLE			
SURFACE ROUGHNESS 125 (3.2 $\mu$ )	APPV'D	JK O'L	5-21-91	HEAT EXCHANGER ASSY			
BREAK EDGES .010 MAX.	APPV'D	JOE O'L	5-21-91	CORE CODE M-24-17-24			
REMOVE ALL BURRS	APPV'D			DO NOT SCALE THIS DRAWING			
TOLERANCE ON DECIMALS				SIZE	FSCM NO.	DRAWING NO.	REV
.X .XX .XXX				D	11245	C-6340G2	E
INCH $\pm$ .1 $\pm$ .06 $\pm$ .XXX				SCALE	1:2	Run Time Code: X	SHEET 1 OF 1
(mm) $\pm$ .254 $\pm$ .152 $\pm$ .XXX							
THIRD ANGLE PROJECTION							
DIMENSIONS AND TOLERANCING ARE PER ANSI STD Y14.5							