

Adapter FC Square Solid

Technical Specification



GENERAL

This specification covers the requirement of the adapter FC Square Solid for SM and MM applications.

APPLICATIONS

- Telecommunications
- Local area network
- Fibre optic instruments
- Testing of optical devices

FEATURES

- Compliant with NTT specifications
- Low insertion loss
- High durability
- Precision alignment straight split sleeves

OPTICAL CHARACTERISTICS

Typical Insertion Loss [dB] at 1310 nm

Adapter Type	SM		MM
	Zirconia split sleeve	Phosphor Bronze Sleeve High Quality	Phosphor Bronze Sleeve Standard
FC Square Solid PC	0.10	0.15	0.25
FC Square Solid APC	0.10	0.15	-

MECHANICAL CHARACTERISTICS

- Insertion Loss variation after 500 connections: < 0.10 dB
- Corrosion resistant body

MATERIALS

Parts	Material	Colour
Body	Nickel plated brass	Metal
Dust cap	Vinyl	Black/Light green
Sleeve	Zirconia or Phosphor Bronze	-

ENVIRONMENTAL SPECIFICATIONS

	min	max
Operating Temperature [°C]	- 40	+ 85
Storage Temperature [°C]	- 40	+ 95

RECOMMENDED PANEL HOLE

The following drawing shows the dimensions recommended for the panel hole:

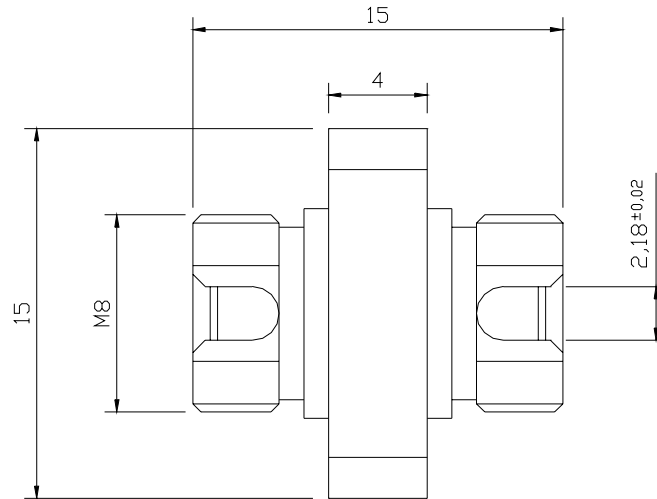
Model	Flange	Recommended Panel Hole
FC Square Solid		

KEY WIDTH

Model	PC	APC
FC Square Solid		

TECHNICAL DRAWING

Adapter FC Square Solid PC



Adapter FC Square Solid APC

