

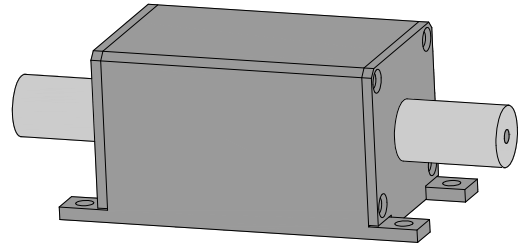
# High Power In-line Isolator with BPF

## Description

It is a high power isolator attached a band pass filter; filter the ASE from forward or backward. They're characterized with low insertion loss, high isolation, high power handling, high return loss, excellent environmental stability and reliability. They are ideal for fiber laser and instrumentation applications.

## Key Features

- \* High isolation and low insertion loss
- \* PM and Non-PM are available
- \* Excellent environmental stability and reliability
- \* Fiber can be customized



## Applications

- \* Fiber Laser
- \* Fiber Sensor

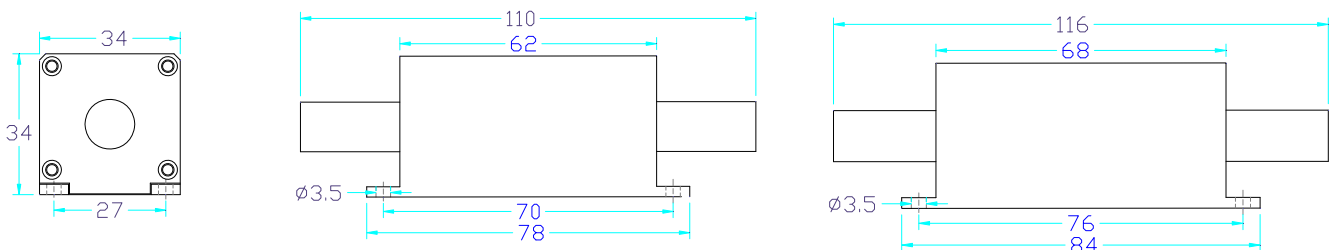
## Specifications

Parameter \ Type	NON-PM Isolator with BPF	PM Isolator with BPF
Operating wavelength( nm)	1030 or 1064	
Pass band( nm)	± 5 or demand	
Typical peak isolation ( dB)	≥30	
Isolation in band at 23℃( dB)	≥28	
Insertion loss at 23℃( dB)	≤1.5	
Return loss ( dB)	≥45	
Extinction ratio(dB)*	/	20(F type) / 18(B type)
Fiber type (can be customized)	HI1060 、 10/125 SCF	SM-98-PS-U25D-H、 PM10/125SCF
Input max. power handling (W)	10 (continue) 、 10K (pulsed)	
Dimensions (L x W x H mm)	110x34x34 (1030nm) ; 116 x 34 x 34 (1064nm)	
Operating temperature(℃)	-5 ~ +50	
Storage temperature(℃)	-20 ~ +70	

\*F type: Slow axis working and fast axis blocked; B type: both axes working.

\*For DCF fiber, the ER is 2dB lower

## Mechanical Dimensions (Unit: mm)



## Ordering Information

HP(M)IITB-X-X-XX-X-X-X-X(XX) -X\*X\*X- X

