

High Power Expanded Beam Isolator, HP(M)EI

Description

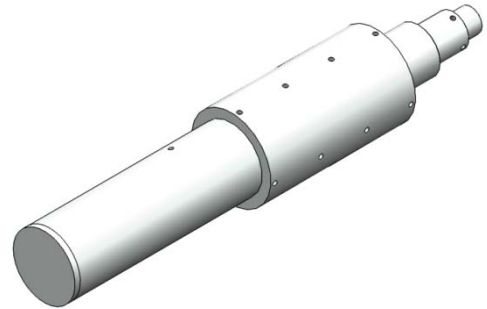
The high power isolator series includes in-line type, beam expanded type, fiber in and free space out type and free space type etc, which are characterized with low insertion loss, high beam quality, high isolation, high power handling, high return loss, excellent environmental stability and reliability. They are ideal products used for fiber laser and instruments applications.

Features

- * High isolation and low insertion loss
- * PM and Non-PM types are available
- * High Beam Quality
- * Fiber can be customized

Applications

- * Fiber Laser
- * Fiber Sensor



HP (M) EI

Specifications

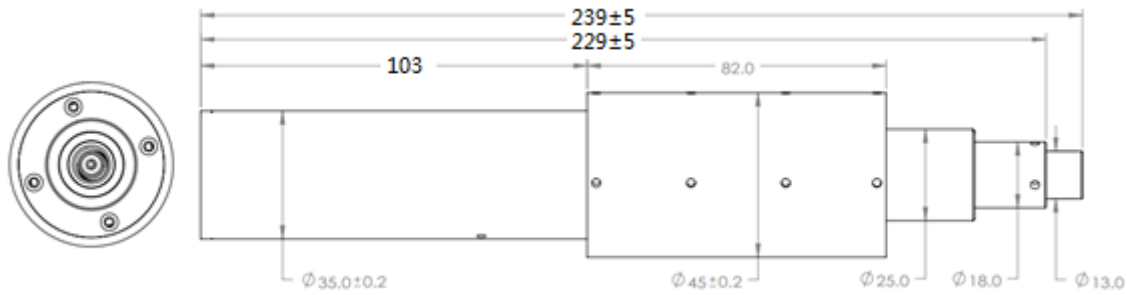
Parameter	Type	High power expanded beam isolator, HP(M)EI	
		Non-PM isolator	PM isolator
Operating wavelength(nm)		1064±5	
Peak isolation (dB)		≥35	
Isolation in band at 23℃(dB)		≥28	
Insertion loss at 23℃(dB)		≤0.50	
Polarization dependent loss (dB)		≤0.15	/
Extinction ratio (dB)		/	≥18(Type B), ≥20(Type F)
Return loss (Input) (dB)		≥50	
Beam Divergence @Fundamental mode (mrad)		≤0.50 (Full Angle)	
Output Beam Ellipticity		≥90%	
Fiber type (can be customized)		HI1060, x/125, x/250, etc. (x=10um, 15um, 20um, 30um,etc.)	PM980, PM x/125, x/250, etc. (x=10um,15um,20um,30um,etc.)
Armored cable diameter		Φ10.5mm, cable can be customized.	
Output beam diameter@1/e ² (mm)		6-8; Others on demand	
Input max. power handling	Average (W)	120	
	Pulse peak(KW)	50	
Reverse Power Handling		≤20W for 1 hour. Max	
Operating Temperature (℃)		-5 ~ +50	
Storage Temperature (℃)		-20 ~ +70	
Dimensions (Φ×L mm)		Φ45×L239	

* Both Single cladding fiber (SCF) and double cladding fiber (DCF) are available.

* Type B: Both axis working, Type F: Fast axis blocked.

*The default fiber length is 2.5m, protective Teflon tube length is 2.1m in a 2m Φ10.5mm Yellow Armored cable.

Mechanical Dimensions (Unit: mm)



Ordering Information

HP(M)EI-XXXX-X-X-X-X -XX*XX-XX-XX

- Fiber length
- Armored cable length
- Package size: $\varnothing 45 \times L239\text{mm}$
- Average power handling: 1=1W, 2=2W, 5=5W, 10=10W, 20=20W etc.
- Power condition: C=Continue Wave, P(10)=Pulse Peak Power(10KW),etc.
- Fiber type: Fiber code
- Armored cable diameter: 10.5mm, etc.
- Operating wavelength: 1064nm etc.
- HPMEI (PM type), HPEI (Non-PM type)