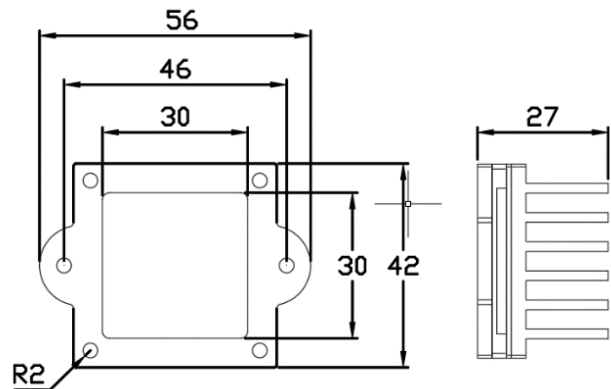
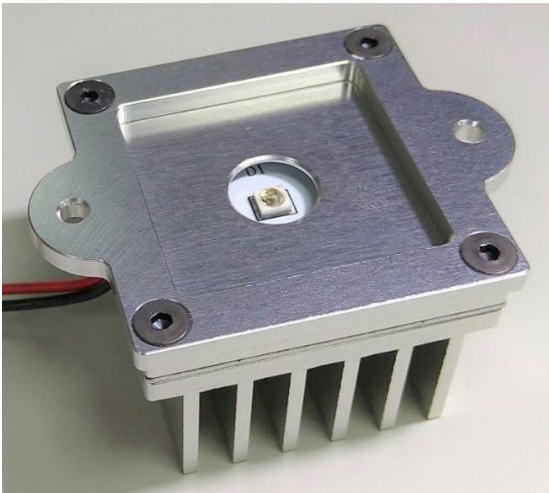




High Power UVC-LED (Wavelength: 270nm, 50mW)

GaN FET Built-in for Constant Current Drive



Design layout (example)

*** Spec. example**

LED spec. (@Vf=6~6.5V)		Driver spec.	
Wavelength	260~280 nm	Input	12 V
Forward current	350 mA	Forward voltage	350 mA
Power	50 mW	Consumption	4.2 W
Radiation angle	120 °	Heat dissipation	Tj ≤ 100°C@Ta40°C, 350mA
		Operation temperature	0~50 °C

Customization is also available

- Application example :
- ✓ Air purifier
- ✓ Air conditioner
- ✓ Water sterilization
- ✓ Belt conveyor surface sterilization
- ✓ Escalator handrail sterilization

お問い合わせ先
nano-sales@ml.ntt-at.co.jp



info@amstechnologies.com
www.amstechnologies-webshop.com

Contact us 