

ViewConn® Pro VC-8200

Overview

ViewConn® Pro (VC-8200) is an integrated system for fiberoptic connector inspection, evaluation, documentation and cleaning. With built in Wi-Fi, ViewConn Pro can send its Pass/Fail analysis reports via email to other locations or store them directly within the unit.

The dual microscopes allow rapid inspection of both male and female connectors without changing tips. Our new auto-centering feature allows faster connector endface location and analysis with the probe.

Designed for ease of use in the field, the 5" display provides clear, sharp images, and the large touchscreen buttons provide all the necessary controls for image capture and analysis. The pre-installed ConnectorView™ Plus software requires no calibration and provides its analysis reports in seconds.

A wide variety of tips, both PC and APC, are available. An optional power meter add-in module can be integrated into ViewConn Pro.

The one comprehensive tool for field inspection, analysis and cleaning.



2210 Lind Ave SW, Suite 100
Renton, WA 98057 USA
(425) 277-8000 Tel
(425) 277-5280 Fax
www.lighttel.com

Distributor

amstechnologies
where technologies meet solutions

info@amstechnologies.com
www.amstechnologies-webshop.com

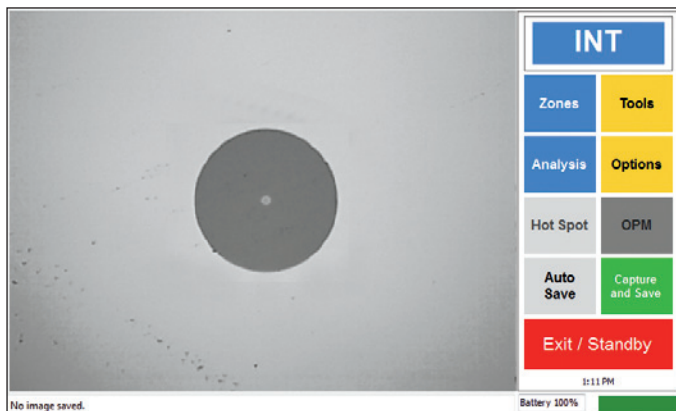
Contact us



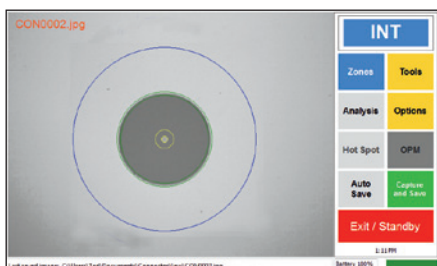
LIGHTTEL

Using ViewConn Pro

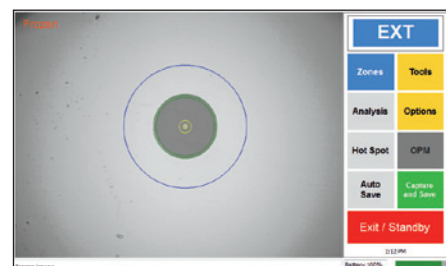
ViewConn Pro is simple to use. The main screen contains all the controls you need to view, capture and analyze connectors. A focus bar and power indicator are present in the lower right corner of the screen.



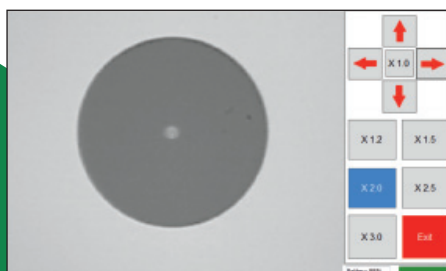
Capturing an image is as **simple** as a touch of the screen.



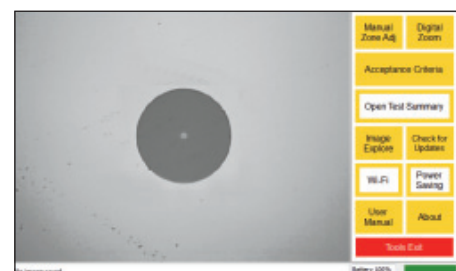
With another touch you can shift to the probe and **save images** from it.



You can **digitally zoom** the connector for a closer look.



Individualize your power settings or set up a **Wi-Fi** connection.



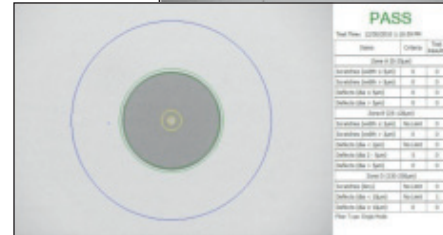
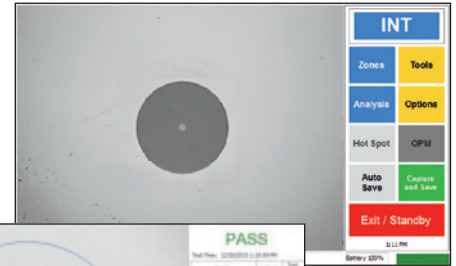
Analyzing Connectors



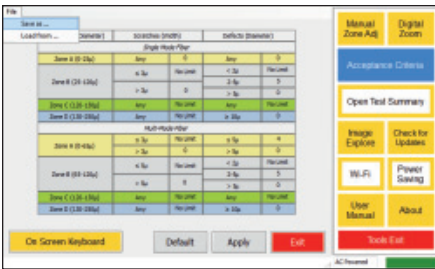
Analyzing connectors is as easy as capturing the images. Select analysis and touch the connector portion of the screen. **No calibration** is necessary. Just select Single mode or Multimode.

The ConnectorView Plus

software can be set to automatically save the Analysis Report or you can choose to save only selected reports. Again it's as simple as a touch of the screen.



The data from each saved report is also automatically saved in a Summary Report.

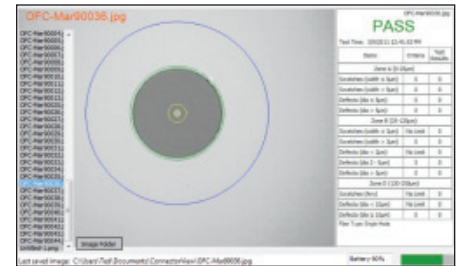


ConnectorView Plus software uses IEC 61300-3-35 as the default standard for its analysis, but the acceptance criteria can be modified to allow for different corporate standards.

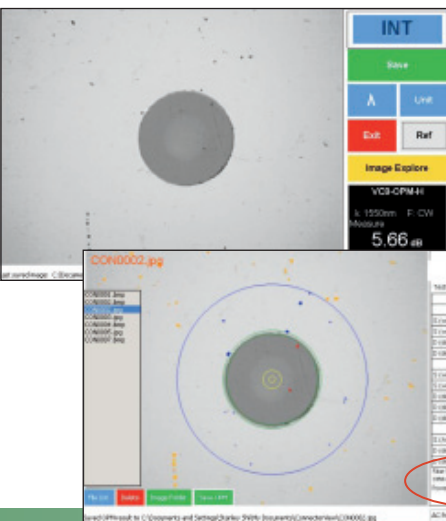
You can easily go back and view any **Analysis Report** or image you have saved.

Multiple standards

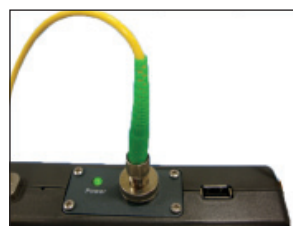
can be stored and reused. A new Summary Report is automatically generated whenever criteria are changed.



ViewConn Pro Power Meter



ViewConn Pro has an **optional integrated power meter**. This add-in module can be installed by Lightel or can be easily installed by the user. Two versions are available for standard or for higher power ranges. Readings can be taken by themselves or linked to an Analysis Report.



VC8-OPM installed in ViewConn Pro



ViewConn® Pro VC-8200

The ViewConn Pro Package includes:

- ViewConn Pro touchscreen device
- ConnectorView Plus (TS) Pass/Fail software
- ViewConn 2.5mm PC universal tip
- ViewConn 1.25mm PC universal tip
- Ruggedized cover
- Neck strap
- Carrying case
- DI-1000L wide-view digital probe
- 2 CC-1 cleaner modules
- Probe tips for FC, SC, and LC PC connectors
- Tip box
- Li-ion battery with AC battery charger/adapter
- Wrist strap
- User's manual

SPECIFICATIONS

ViewConn

Field of View	~464µm x 338µm
Resolution	0.5 µm detectable
Optical Sensor	CMOS
Light Source	Blue LED
LCD Display	5" LCD color touchscreen
Power Supply	Li-Ion internally rechargeable battery or 12V DC adapter Adjustable automatic power saving Low battery indicator
Battery Life	≥3 hours (continuous)
Electrical Ports	DC adapter plug port 1 USB2.0 port
Dimensions (including ruggedized cover)	186mm (H) x 218mm (W) x 44mm (D)
Weight (including battery and ruggedized cover)	1.4kg
Storage	8GB SSD
Memory	1GB
Processor	Atom Z530
Internet Connection	Wi-Fi

Probe

Field of View	~660µm x 495µm
Resolution	0.5 µm detectable
Optical Sensor	CMOS
Light Source	Blue LED
Power Supply	USB2.0 connection with ViewConn
Output	USB2.0 plug
Dimensions	35mm ø x 175mm (without cap)

Software (pre-loaded)

Operating System	Windows XP®
ConnectorView™ Plus	Pass/Fail Analysis Full screen, touchscreen operation
Analysis Time	~4 seconds (average)
Auto-center Function	For wide-view probe



LIGHTTEL

2210 Lind Ave SW, Suite 100
Renton, WA 98057 USA
(425) 277-8000 Tel
(425) 277-5280 Fax
www.lighttel.com

Distributor

amstechnologies
where technologies meet solutions

info@amstechnologies.com
www.amstechnologies-webshop.com

Contact us 